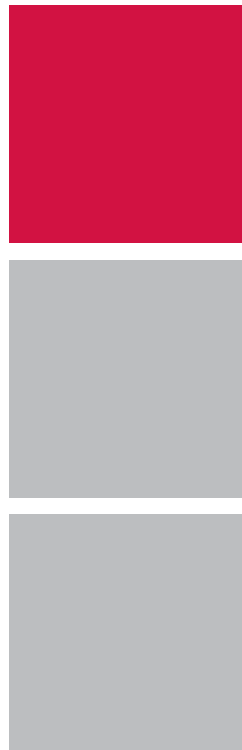
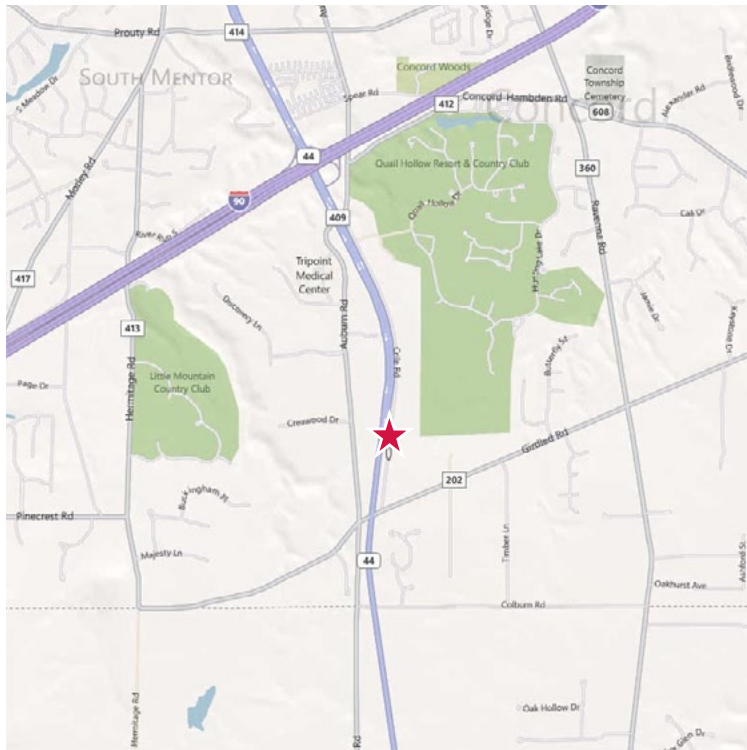


8023 Crile Road

# Office/Warehouse Available For Sale or Lease

Concord Township, Ohio 44077



## Property Features

- Building Size: 47,169 ± SF
- Warehouse Size: 34,438 ± SF, Div. from 9,560 ± SF
- Office Size: 12,731 ± SF
  - First Floor: 7,653 ± SF
  - Second Floor: 5,078 ± SF
- Land: 9.54 ± Acres
- Docks: 6
- Drive-In Doors: 1
- Ceiling Heights: 19' to 20'
- Partial New Roof in 2011
- Easy Highway Access

### Contact Information

**Robert Brehmer, CCIM, Owner/Broker**  
p 216 455 0920 | [rbrehmer@naidaus.com](mailto:rbrehmer@naidaus.com)

**Lisa Trevino, Sales Associate**  
p 216 455 0885 | [ltrevino@naidaus.com](mailto:ltrevino@naidaus.com)



Commercial Real Estate Services, Worldwide.  
Business Property Specialists, Inc. Broker

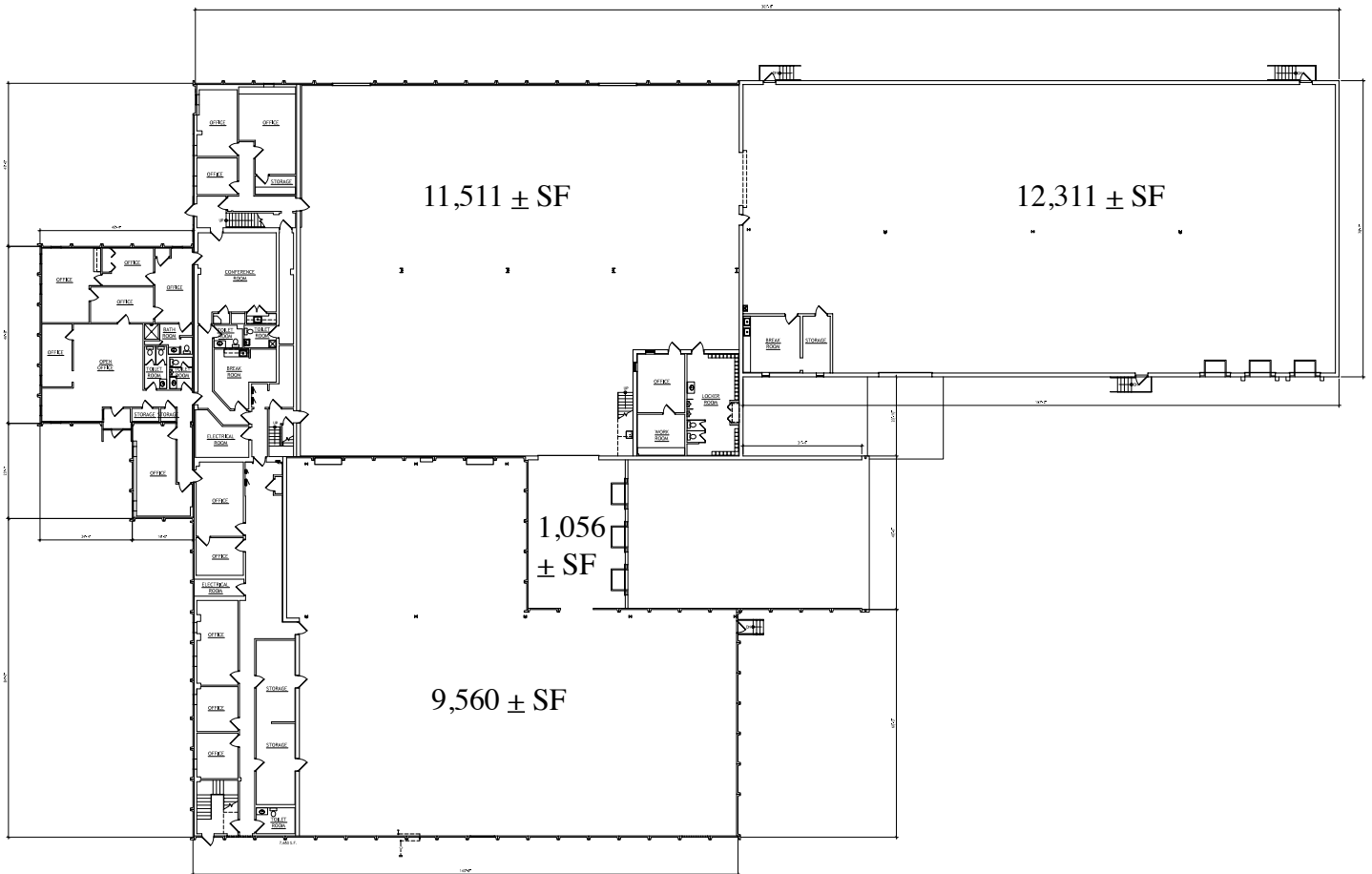
[Take a Video Tour](#)

This information has been secured from sources we believe to be reliable, but we make no representations or warranties, expressed or implied, as to the accuracy of the information. References to square footage or age are approximate. Buyer must verify the information and bears all risk for any inaccuracies.

8023 Crile Road

# Office/Warehouse Available For Sale or Lease

Concord Township, Ohio 44077



First Floor Plan



Commercial Real Estate Services, Worldwide.

Business Property Specialists, Inc. Broker

This information has been secured from sources we believe to be reliable, but we make no representations or warranties, expressed or implied, as to the accuracy of the information. References to square footage or age are approximate. Buyer must verify the information and bears all risk for any inaccuracies.

## Contact Information

Robert Brehmer, CCIM, Owner/Broker  
p 216 455 0920 | [rbrehmer@naid.us](mailto:rbrehmer@naid.us)

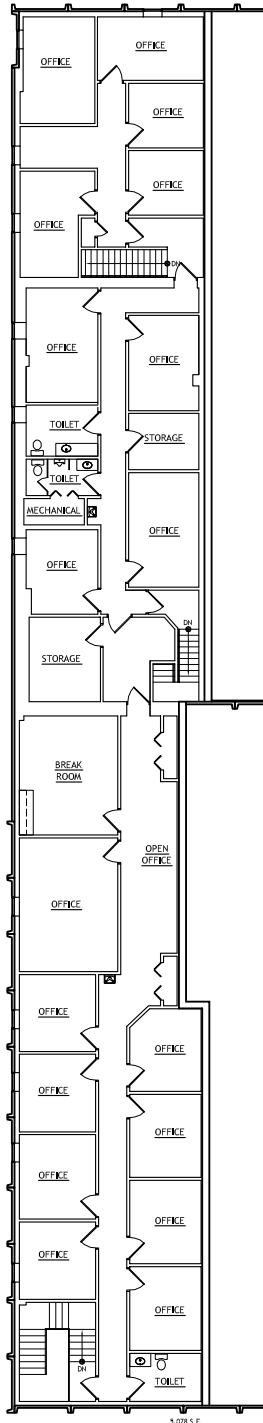
Lisa Trevino, Sales Associate  
p 216 455 0885 | [ltrevino@naid.us](mailto:ltrevino@naid.us)

8023 Crile Road

# Office/Warehouse Available For Sale or Lease

Concord Township, Ohio 44077

Second Floor Plan



Commercial Real Estate Services, Worldwide.  
Business Property Specialists, Inc. Broker

This information has been secured from sources we believe to be reliable, but we make no representations or warranties, expressed or implied, as to the accuracy of the information. References to square footage or age are approximate. Buyer must verify the information and bears all risk for any inaccuracies.

## Contact Information

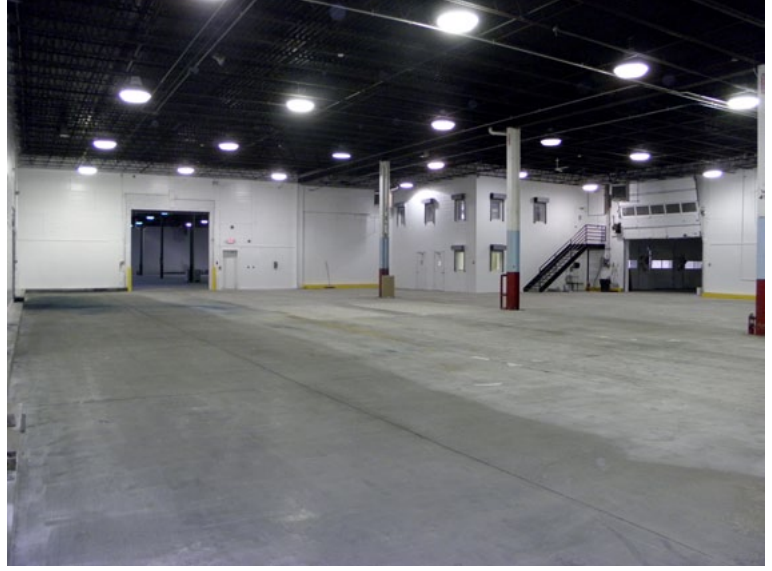
**Robert Brehmer, CCIM, Owner/Broker**  
p 216 455 0920 | [rbrehmer@naidaus.com](mailto:rbrehmer@naidaus.com)

**Lisa Trevino, Sales Associate**  
p 216 455 0885 | [ltrevino@naidaus.com](mailto:ltrevino@naidaus.com)

8023 Crile Road

# Office/Warehouse Available For Sale or Lease

Concord Township, Ohio 44077



Commercial Real Estate Services, Worldwide.

Business Property Specialists, Inc. Broker

This information has been secured from sources we believe to be reliable, but we make no representations or warranties, expressed or implied, as to the accuracy of the information. References to square footage or age are approximate. Buyer must verify the information and bears all risk for any inaccuracies.

## Contact Information

**Robert Brehmer, CCIM, Owner/Broker**  
p 216 455 0920 | [rbrehmer@naid.us](mailto:rbrehmer@naid.us)

**Lisa Trevino, Sales Associate**  
p 216 455 0885 | [ltrevino@naid.us](mailto:ltrevino@naid.us)

8023 Crile Road

# Office/Warehouse Available For Sale or Lease

Concord Township, Ohio 44077



Commercial Real Estate Services, Worldwide.

Business Property Specialists, Inc. Broker

This information has been secured from sources we believe to be reliable, but we make no representations or warranties, expressed or implied, as to the accuracy of the information. References to square footage or age are approximate. Buyer must verify the information and bears all risk for any inaccuracies.

## Contact Information

**Robert Brehmer, CCIM, Owner/Broker**  
p 216 455 0920 | [rbrehmer@naidaus.com](mailto:rbrehmer@naidaus.com)

**Lisa Trevino, Sales Associate**  
p 216 455 0885 | [ltrevino@naidaus.com](mailto:ltrevino@naidaus.com)