



Medical/Office Space Available
9150 Market Square Dr.
 Streetsboro, Ohio

Property Description

- 2 Story, 21,000 SF Medical/Office Complex with Elevator

Suites Available:

- Suite 101: 2,028 SF +/-
- Suite 102: 1,953 SF +/-
- Suite 104: 2,094 SF +/-
- Suite 203: 4,816 SF +/-

- Built in 2000
- Close proximity to Ohio Turnpike, I-480.
- Directly from Target, Lowe's and Giant Eagle.
- Lighted parking lot.
- Access to restaurants and community shopping.



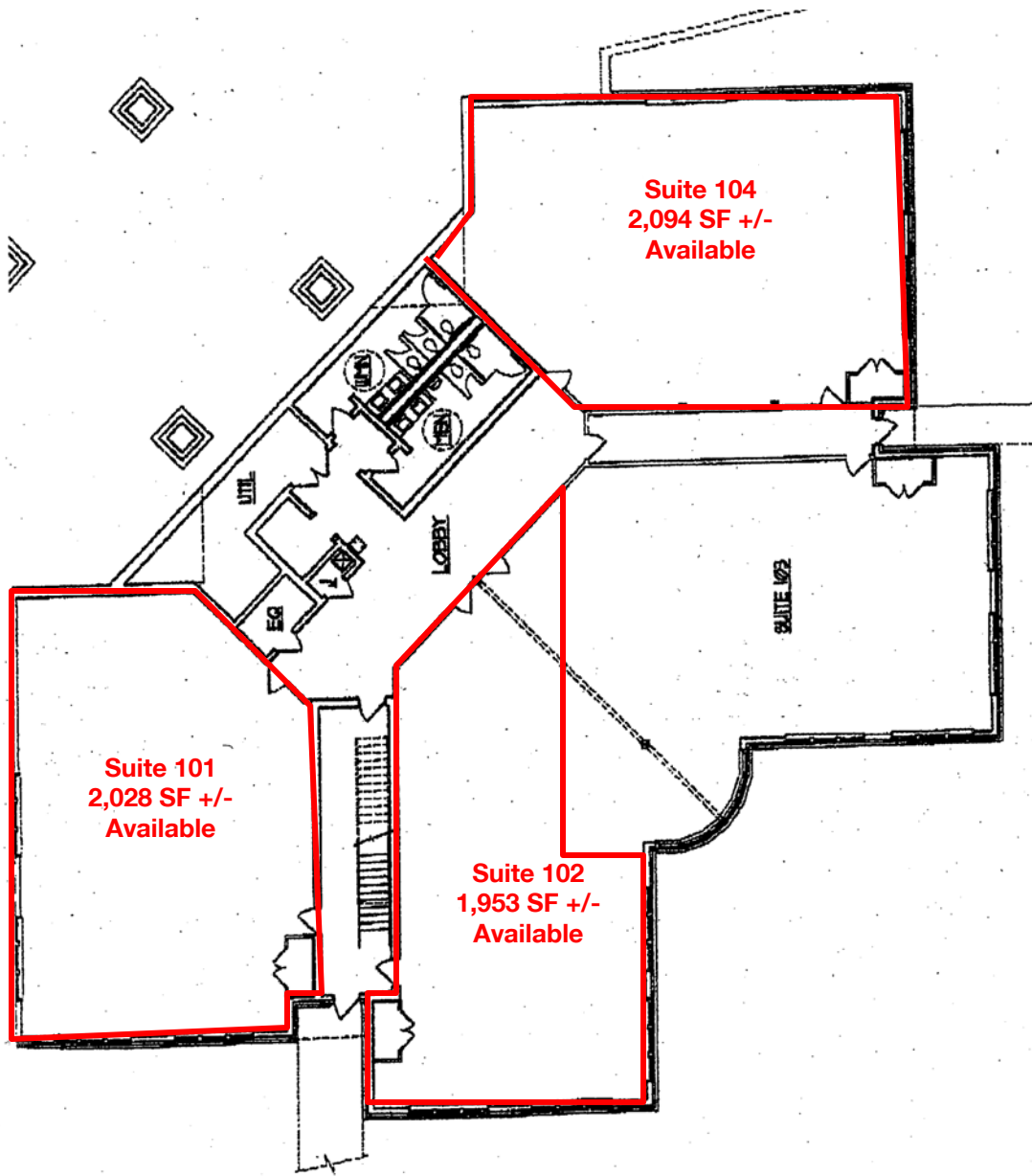
contact information
 Robert K. Brehmer, CCIM
 rbrehmer@naidaus.com
 216.831.3310 Ext. 120
 Lisa Trevino
 ltrevino@naidaus.com
 216.831.3310 Ext. 185

23240 Chagrin Blvd., #250
 Cleveland, OH 44122
 www.naidaus.com

NAIDaus
 Commercial Real Estate Services, Worldwide.
 Business Property Specialists, Inc. Broker

This information has been secured from sources we believe to be reliable, but we make no representations or warranties, expressed or implied, as to the accuracy of the information. References to condition, square footage or age are approximate. Buyer or Tenant acknowledges that they are relying on their own investigations and are not relying on Broker provided information.

9150 Market Square Drive
First Floor
Streetsboro, Ohio



Demographics: (3,5,10-mile radius/2009 estimate)

Population: 17,585 / 51,618 / 252,062
Households: 7,315 / 20,117 / 99,815
Ave. Household Income: \$80,892 / \$96,201 / \$77,990

contact information
Robert K. Brehmer, CCIM
rbrehmer@naidaus.com
216.831.3310 Ext. 120
Lisa Trevino
ltrevino@naidaus.com
216.831.3310 Ext. 185

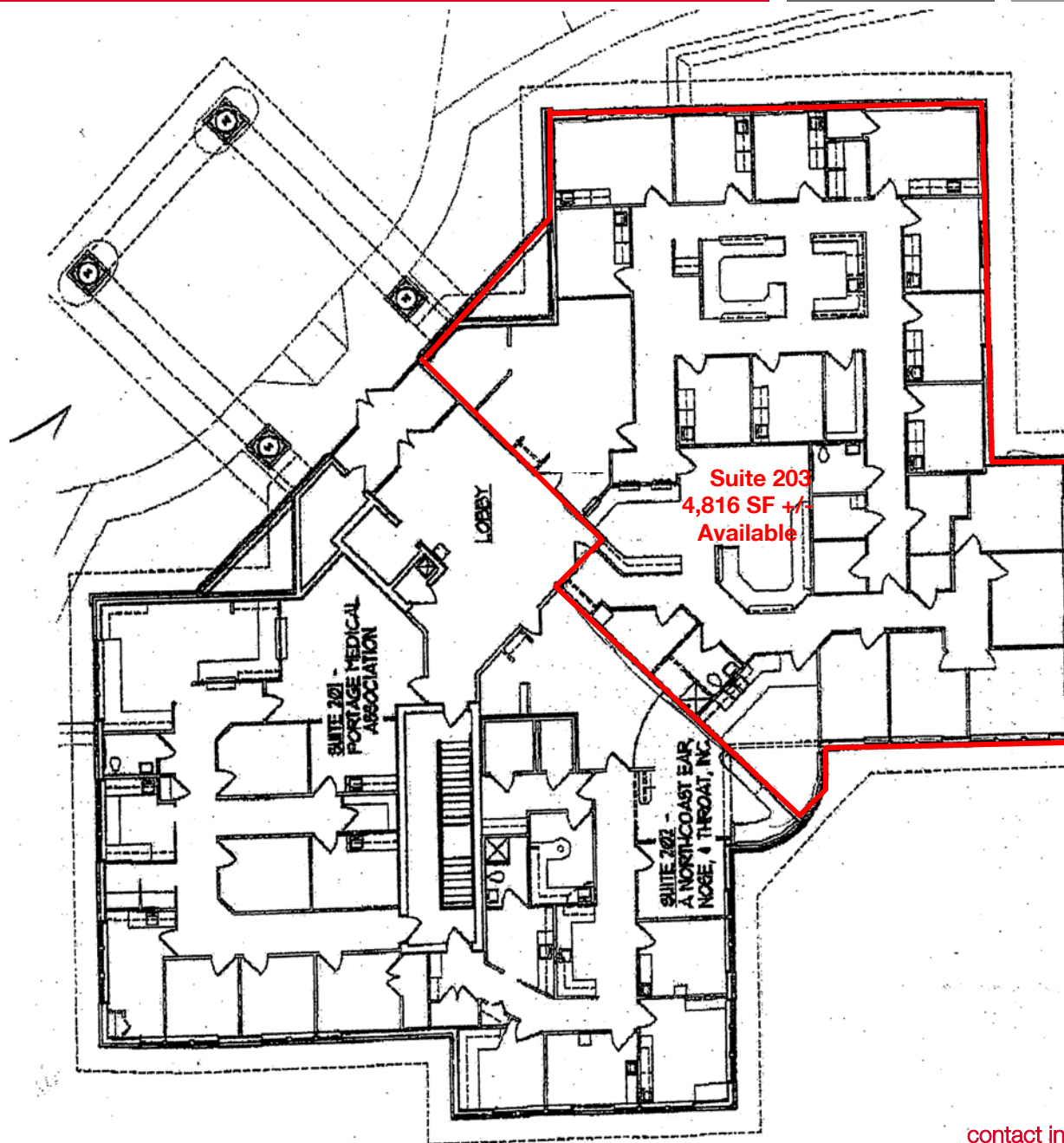


Commercial Real Estate Services, Worldwide.
Business Property Specialists, Inc. Broker

Fax: 216.831.9869
23240 Chagrin Blvd., #250
Cleveland, OH 44122
www.naidaus.com

This information has been secured from sources we believe to be reliable, but we make no representations or warranties, expressed or implied, as to the accuracy of the information. References to condition, square footage or age are approximate. Buyer or Tenant acknowledges that they are relying on their own investigations and are not relying on Broker provided information.

9150 Market Square Drive
Second Floor
Streetsboro, Ohio



contact information
Robert K. Brehmer, CCIM
rbrehmer@naidaus.com
216.831.3310 Ext. 120
Lisa Trevino
ltrevino@naidaus.com
216.831.3310 Ext. 185



Commercial Real Estate Services, Worldwide.
Business Property Specialists, Inc. Broker

Fax: 216.831.9869
23240 Chargin Blvd., #250
Cleveland, OH 44122
www.naidaus.com

This information has been secured from sources we believe to be reliable, but we make no representations or warranties, expressed or implied, as to the accuracy of the information. References to condition, square footage or age are approximate. Buyer or Tenant acknowledges that they are relying on their own investigations and are not relying on Broker provided information.