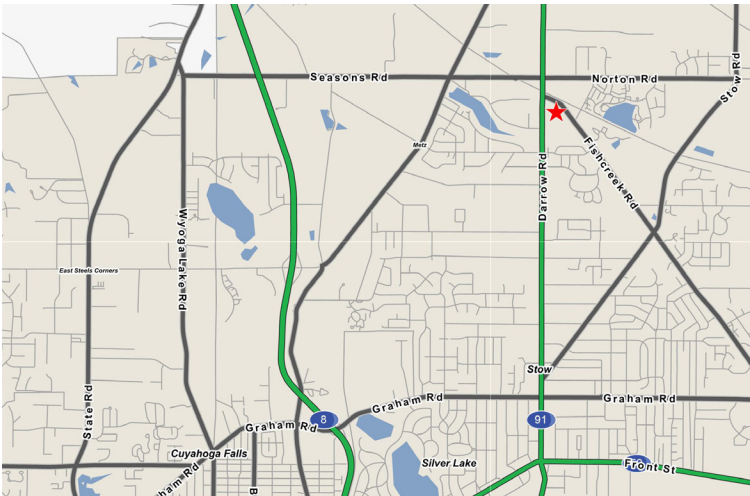


Fishcreek Road 7.087 ± Acres For Sale

Stow, Ohio



Property Features

- 7.087 Acres ±
- Zoned: C3 - Community Retail Zoning
- Traffic Count: 21,870 (Darrow Road and Norton Road)
- Nearby tenants include: Giant Eagle, Great Clips, Bruegger's Bagels
- Great Location for a nursing home or assistant living.



Commercial Real Estate Services, Worldwide.
Business Property Specialists, Inc. Broker

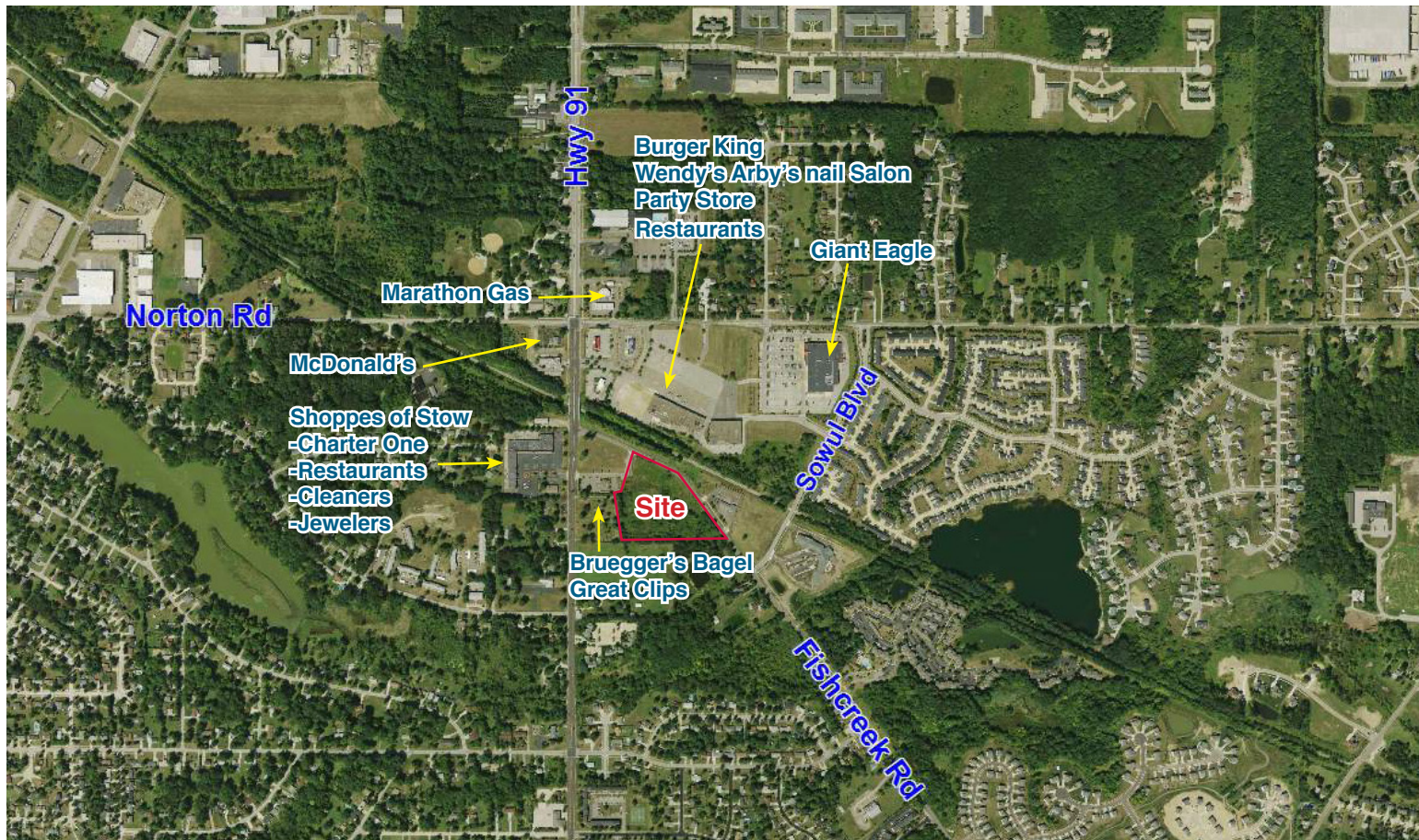
This information has been secured from sources we believe to be reliable, but we make no representations or warranties, expressed or implied, as to the accuracy of the information. References to square footage or age are approximate. Buyer must verify the information and bears all risk for any inaccuracies.

Contact Information

Robert Brehmer, CCIM
p 216 455 0920 | rbrehmer@naid.us
Lisa Trevino, Sales Associate
p 216 455 0885 | ltrevino@naid.us
www.naid.us

Fishcreek Road 7.087 ± Acres For Sale

Stow, Ohio



Demographics 2009	3 Miles	5 Miles	7 Miles
Population	55,472	126,477	416,682
Estimated Households	22,262	52,884	171,386
Average Household Income	\$71,964	\$68,464	\$61,632



Commercial Real Estate Services, Worldwide.
Business Property Specialists, Inc. Broker

Contact Information

Robert Brehmer, CCIM

p 216 455 0920 | rbrehmer@naidaus.com

Lisa Trevino, Sales Associate

p 216 455 0885 | ltrevino@naidaus.com

www.naidaus.com

This information has been secured from sources we believe to be reliable, but we make no representations or warranties, expressed or implied, as to the accuracy of the information. References to square footage or age are approximate. Buyer must verify the information and bears all risk for any inaccuracies.