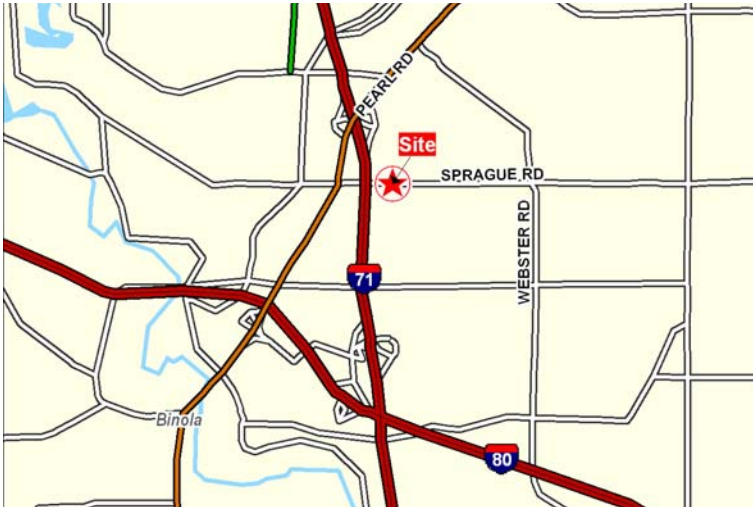


For Sale — Freeway Circle Dr.

2.97 & 3.54 Acres +/-
Middleburg Heights, Ohio

Property Description

- Approximately 2.97 & 3.54 acres
- 420' & 331.17 +/- Fronting on I-71.
- To Cleveland and suburbs via I-71, I-480 & I-80
- Zoned GB—General Business
- Great general or professional office location.
- Build to suit.



Commercial Real Estate Services, Worldwide.

Business Property Specialists, Inc. Broker

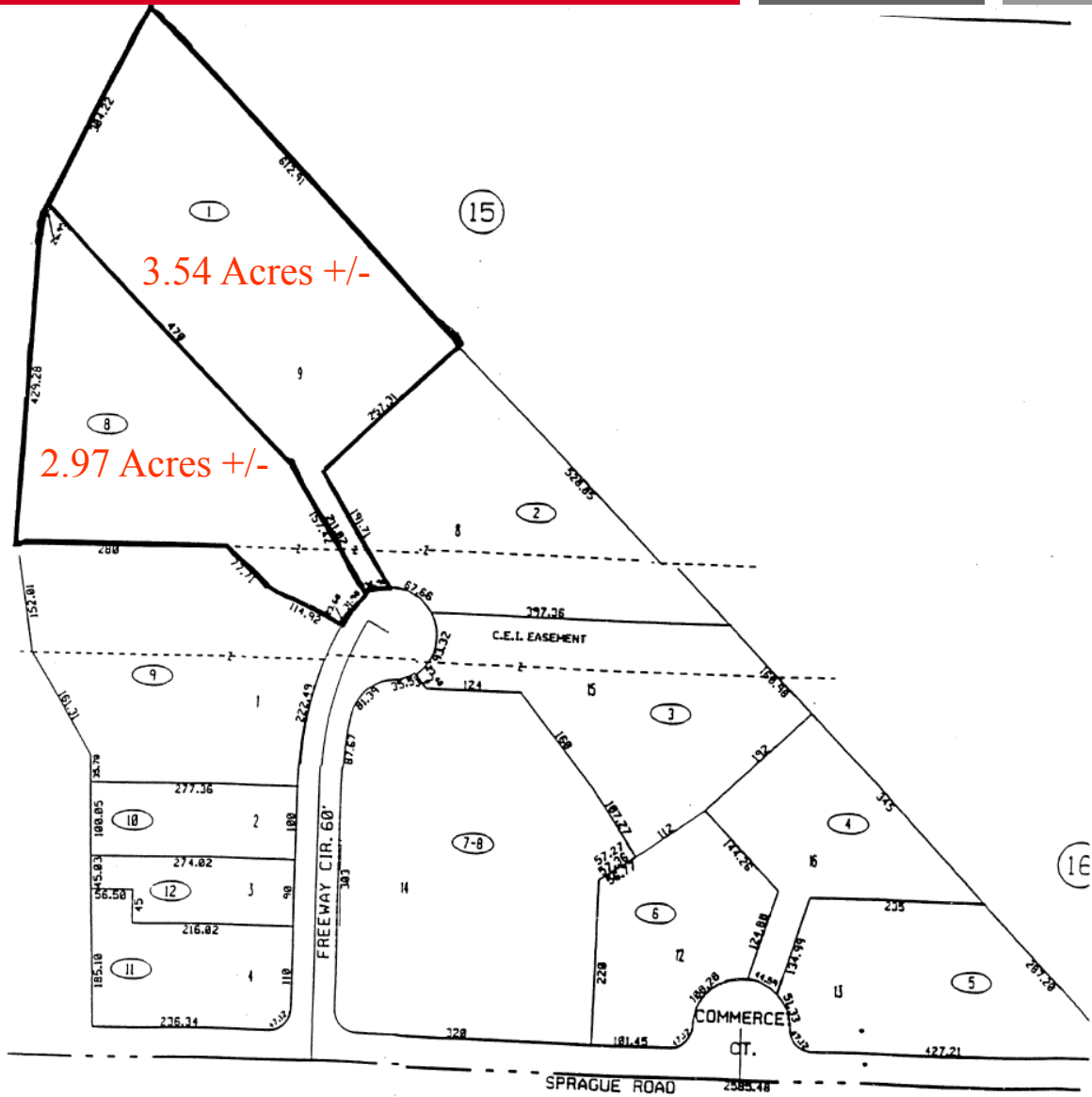
contact information

Robert K. Brehmer, CCIM
Principal
3401 Enterprise Pkw., #105
Cleveland, OH 44122
www.naidaus.com
tel 216 831 3310 ext. 120
fax 216 831 9869
rbrehmer@naidaus.com

This information has been secured from sources we believe to be reliable, but we make no representations or warranties, expressed or implied, as to the accuracy of the information. References to condition, square footage or age are approximate. Buyer or Tenant acknowledges that they are relying on their own investigations and are not relying on Broker provided information.

Freeway Circle SITE MAP

Middleburg Heights, Ohio



Development Land For Sale 2.97 & 3.54 Acres +/-



Commercial Real Estate Services, Worldwide.

Business Property Specialists, Inc. Broker

contact information

Robert K. Brehmer, CCIM
Principal
3401 Enterprise Pkw., #105
Cleveland, OH 44122
www.alanrdaus.com
tel 216 831 3310 ext. 120
fax 216 831 9869

FREEWAY CIRCLE MIDDLEBURG HEIGHTS –View Facing North



NAIDaus

Commercial Real Estate Services, Worldwide.

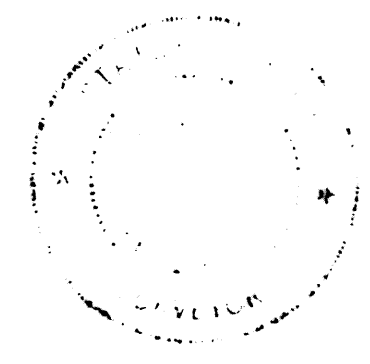
Business Property Specialists, Inc. Broker

This information has been secured from sources we believe to be reliable, but we make no representations or warranties, expressed or implied, as to the accuracy of the information. References to condition, square footage or age are approximate. Buyer or Tenant acknowledges that they are relying on their own investigations and are not relying on Broker provided information.

3401 Enterprise Pkwy.
Suite #105
Cleveland, Ohio 44122
tel 216 831 3310
fax 216 831 9869
www.naidaus.com

BALDWIN GLENS OFFICE COMMONS RE-SUBDIVISION

OF S/L 5,6,7,11, PT. 12/13 AS RECORDED IN THE
BALDWIN GLENS OFFICE COMMONS SUBDIVISION
VOL. 209 PG. 10 C.C.R.



SCALE 1"=100'
DATE APR. 1975
JOB 2702



- ① Z034 144.00'
144.00'
144.00'
144.00'
144.00'
144.00'
144.00'
144.00'
144.00'
144.00'
- ② Z034 144.00'
144.00'
144.00'
144.00'
144.00'
144.00'
144.00'
144.00'
144.00'
144.00'
- ③ Z034 144.00'
144.00'
144.00'
144.00'
144.00'
144.00'
144.00'
144.00'
144.00'
144.00'
- ④ Z034 144.00'
144.00'
144.00'
144.00'
144.00'
144.00'
144.00'
144.00'
144.00'
144.00'
- ⑤ Z034 144.00'
144.00'
144.00'
144.00'
144.00'
144.00'
144.00'
144.00'
144.00'
144.00'
- ⑥ Z034 144.00'
144.00'
144.00'
144.00'
144.00'
144.00'
144.00'
144.00'
144.00'
144.00'
- ⑦ Z034 144.00'
144.00'
144.00'
144.00'
144.00'
144.00'
144.00'
144.00'
144.00'
144.00'
- ⑧ Z034 144.00'
144.00'
144.00'
144.00'
144.00'
144.00'
144.00'
144.00'
144.00'
144.00'
- ⑨ Z034 144.00'
144.00'
144.00'
144.00'
144.00'
144.00'
144.00'
144.00'
144.00'
144.00'
- ⑩ Z034 144.00'
144.00'
144.00'
144.00'
144.00'
144.00'
144.00'
144.00'
144.00'
144.00'
- ⑪ Z034 144.00'
144.00'
144.00'
144.00'
144.00'
144.00'
144.00'
144.00'
144.00'
144.00'
- ⑫ Z034 144.00'
144.00'
144.00'
144.00'
144.00'
144.00'
144.00'
144.00'
144.00'
144.00'
- ⑬ Z034 144.00'
144.00'
144.00'
144.00'
144.00'
144.00'
144.00'
144.00'
144.00'
144.00'
- ⑭ Z034 144.00'
144.00'
144.00'
144.00'
144.00'
144.00'
144.00'
144.00'
144.00'
144.00'
- ⑮ Z034 144.00'
144.00'
144.00'
144.00'
144.00'
144.00'
144.00'
144.00'
144.00'
144.00'
- ⑯ Z034 144.00'
144.00'
144.00'
144.00'
144.00'
144.00'
144.00'
144.00'
144.00'
144.00'
- ⑰ Z034 144.00'
144.00'
144.00'
144.00'
144.00'
144.00'
144.00'
144.00'
144.00'
144.00'
- ⑱ Z034 144.00'
144.00'
144.00'
144.00'
144.00'
144.00'
144.00'
144.00'
144.00'
144.00'
- ⑲ Z034 144.00'
144.00'
144.00'
144.00'
144.00'
144.00'
144.00'
144.00'
144.00'
144.00'
- ⑳ Z034 144.00'
144.00'
144.00'
144.00'
144.00'
144.00'
144.00'
144.00'
144.00'
144.00'

SITUATED IN THE CITY OF MIDDLEBURG HEIGHTS, COUNTY OF CUYAHOGA, STATE OF OHIO AND KNOWN AS BEING PART OF ORIGINAL MIDDLEBURG TOWNSHIP SECTION NO. 6.

DISTANCES SHOWN HEREON ARE GIVEN IN FEET AND DECIMAL PARTS THEREOF. I CERTIFY ALL TO BE CORRECT.
Charles J. Neff
CHARLES J. NEFF
REG. SURVEYOR NO. 4546

APPROVALS:
THIS PLAN APPROVED BY THE PLANNING COMMISSION OF THE CITY OF MIDDLEBURG HEIGHTS THIS 12th DAY OF DECEMBER 1975. THIS APPROVAL IS FOR RECORD PURPOSES ONLY.

ACCEPTANCE:

WE, THE UNDERSIGNED OWNERS OF THE LAND SHOWN HEREON DO HEREBY ACCEPT THIS PLAN AND RE-SUBDIVISION.

SIXTIES FUND
A PARTNERSHIP OF A.R. MAYS AND GILBERT H. KINCHEN

A.R. MAYS

GILBERT H. KINCHEN

M.-K.
A PARTNERSHIP OF A.R. MAYS AND GILBERT H. KINCHEN

A.R. MAYS

GILBERT H. KINCHEN

MAYOR
Nancy Ann Fisher
SECRETARY

RECEIVED FOR RECORD
AT 2:29 P.M.
DEC 29 1975
RECORDED IN CUYAHOGA COUNTY BOOK 119 PAGE 99
MARKED BY County Recorder

INTERSTATE PLAZA CO.
A GENERAL PARTNERSHIP.

A.R. MAYS

GILBERT H. KINCHEN

COUNTY OF CUYAHOGA } S.S.
STATE OF OHIO }
BEFORE ME A NOTARY PUBLIC IN AND FOR SAID COUNTY AND STATE, PERSONALLY APPEARED THE ABOVE SIGNED OFFICERS OF THE SIXTIES FUND, M.-K., AND THE INTERSTATE PLAZA COMPANY WHO ACKNOWLEDGED THE SIGNING OF THE FOREGOING INSTRUMENT TO BE THEIR FREE ACT AND DEED AND AS SUCH OFFICERS, THE FREE AND CORPORATE ACT OF THE SIXTIES FUND, M.-K., AND THE INTERSTATE PLAZA COMPANY.
IN WITNESS WHEREOF I HAVE HEREON SET MY HAND AND OFFICIAL SEAL THIS 12th DAY OF DECEMBER 1975.

NOTARY PUBLIC, MY COMMISSION EXPIRES _____

PARTY TRUSTEESON

BY *Charles H. Hatcher* 12/29/75

Vol 216
PAGE 99

Johnnie Sykes

PREPARED BY:
NEFF ASSOCIATES, INC.
CONSULTING ENGINEERS / SURVEYORS
6415 STUMPH ROAD
CLEVELAND, OHIO 44130

O.L. 31
O.L. 30

