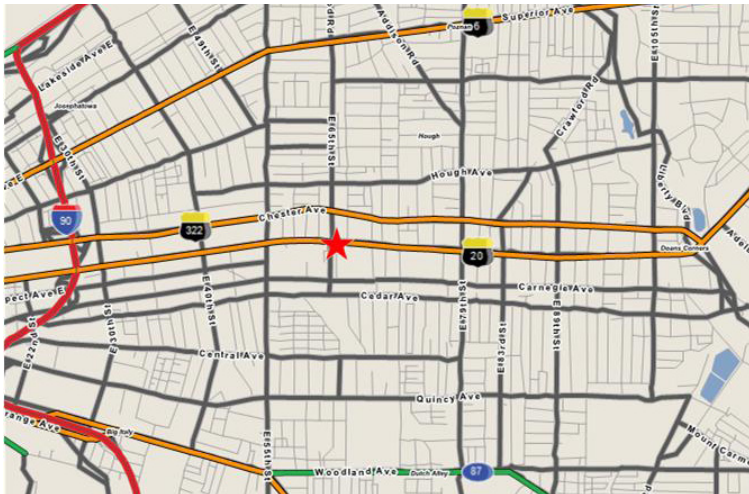
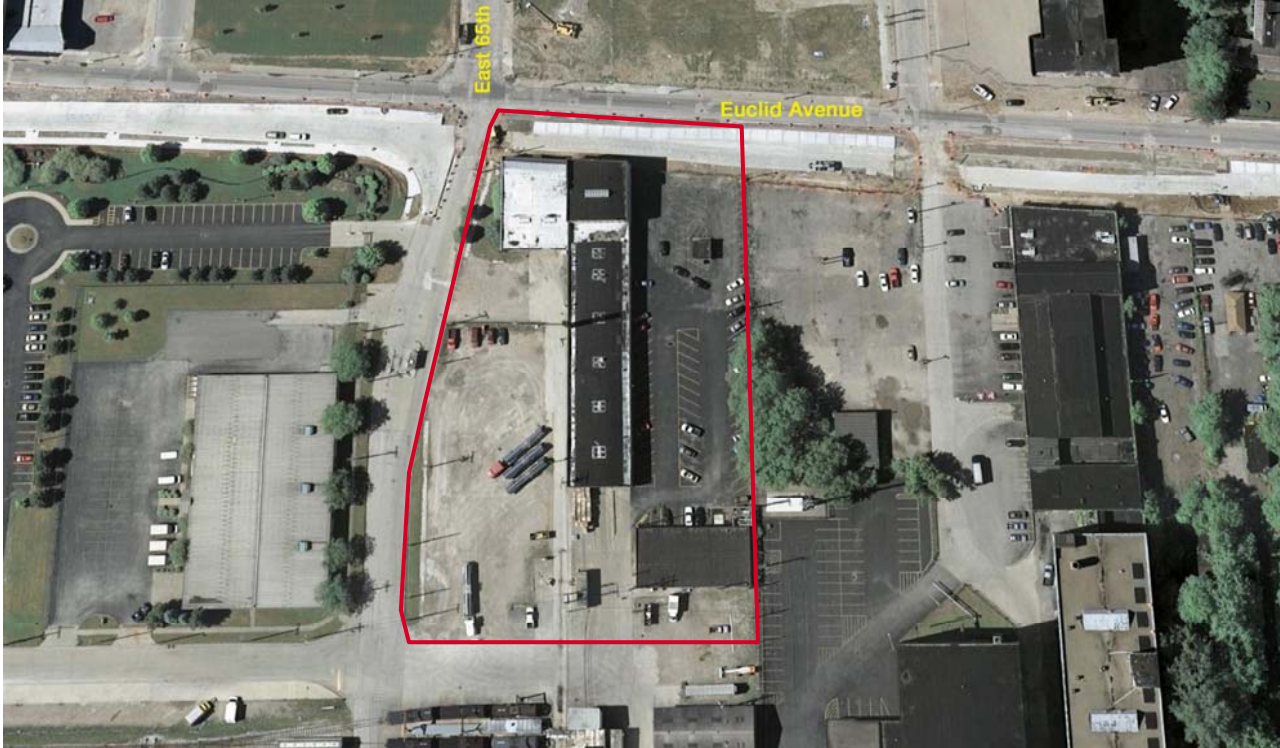


# 6510 Euclid Avenue MidTown Development Site Cleveland, OH



## Property Features

- Acres: 3.14 ± /Buildable: 2.69± Acres
- Building: 31,822 ± SF
- Capable of 40,000 to 50,000 + SF Development
- Located In The Heart of MidTown, 0.9 Miles From Cleveland Clinic
- 310' Frontage on Euclid Avenue
- Located across from the Health Line Transit Station
- On Site 24 Hour Security



Commercial Real Estate Services, Worldwide.  
Business Property Specialists, Inc. Broker

This information has been secured from sources we believe to be reliable, but we make no representations or warranties, expressed or implied, as to the accuracy of the information. References to square footage or age are approximate. Buyer must verify the information and bears all risk for any inaccuracies.

## Contact Information

Scott Garson, CCIM, Sr. Vice President  
p 216 455 0935 | f 2316 831 9869

[sgarson@naidaus.com](mailto:sgarson@naidaus.com) | [www.naidaus.com](http://www.naidaus.com)

23240 Chagrin Blvd. Ste. 250 Cleveland, OH 44122

