



**Office/Warehouse Flex - For Lease**  
**1929 — 1937 E. Aurora Rd.**  
 Twinsburg, Ohio



**Property Description**

<b>Total:</b>	2,000—8,000 sq .ft. ±
<b>Warehouse:</b>	6,000 sq. ft. ±
<b>Office:</b>	2,000 sq. ft. ±
<b>Min. Divisible:</b>	2,000 sq. ft. ±
<b>Zoning:</b>	I-2 Limited Industrial
<b>Clear Height:</b>	12' - 14'
<b>Truck Docks:</b>	Yes
<b>Drive-ins:</b>	Yes
<b>Heat:</b>	HVAC
<b>Lighting:</b>	Fluorescent
<b>Comments:</b>	Two contiguous units totaling 4,000 sf

	<u>Unit 1929</u>	<u>Unit 1933</u>	<u>Unit 1933A</u>	<u>Unit 1937</u>
Office	0	2,000	0	0
Warehouse	2,000	0	2,000	2,000

*contact information*  
**Ira Krumholz x105**  
 Vice President  
 ikrumholz@naidaus.com  
 3401 Enterprise Pkw., #105  
 Cleveland, OH 44122  
 www.naidaus.com  
 tel 216 831 3310  
 fax 216 831 9869



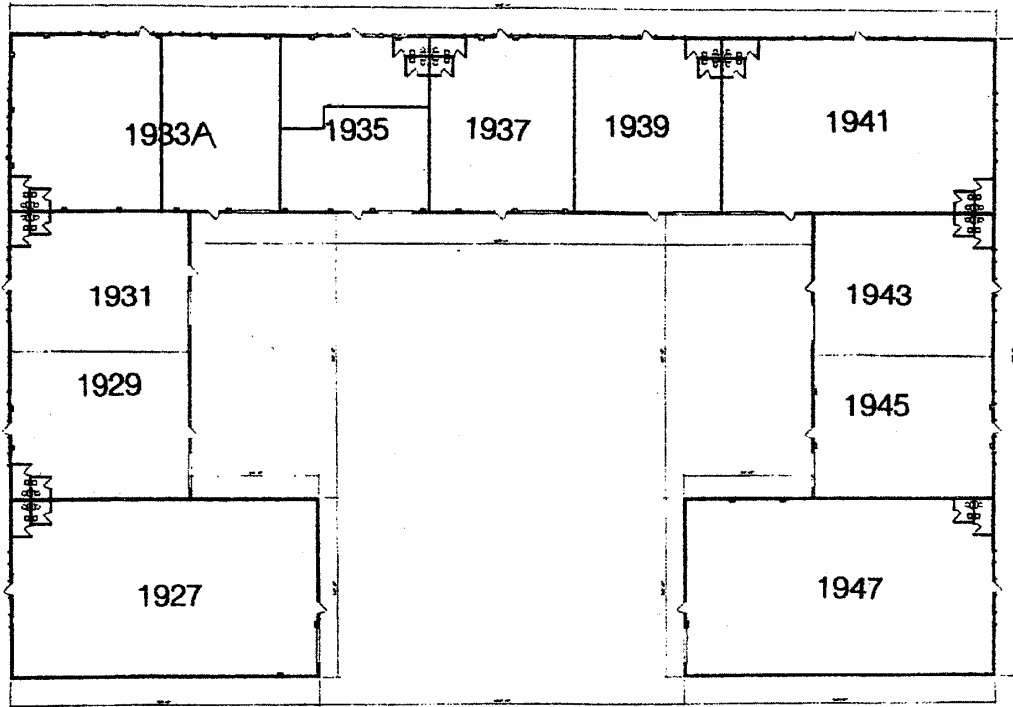
Commercial Real Estate Services, Worldwide.

Business Property Specialists, Inc. Broker

This information has been secured from sources we believe to be reliable, but we make no representations or warranties, expressed or implied, as to the accuracy of the information. References to condition, square footage or age are approximate. Buyer or Tenant acknowledges that they are relying on their own investigations and are not relying on Broker provided information.

# 1929—1945 E. Aurora Rd. Floor Plan

Twinsburg, Ohio



EXISTING CONDITIONS FLOOR PLAN

TEENANT BUILDING PLAN  
OMNI PARK  
1927-1947 AURORA ROAD  
TWINSBURG, OHIO 44087

1

OMNI PARK

## Office/Warehouse—Flex For Lease



Commercial Real Estate Services, Worldwide.  
Business Property Specialists, Inc. Broker

This information has been secured from sources we believe to be reliable, but we make no representations or warranties, expressed or implied, as to the accuracy of the information. References to condition, square footage or age are approximate. Buyer or Tenant acknowledges that they are relying on their own investigations and are not relying on Broker provided information.

**contact information**  
**Ira Krumholz**  
Vice President  
3401 Enterprise Pkw., #105  
Cleveland, OH 44122  
tel 216 831 3310  
fax 216 831 9869