



For Lease
26101 Fargo Ave.
Bedford Heights, Ohio

Property Description

Square Feet:	30,000—77,167 sq.ft. ±
Warehouse:	74,719 sq.ft. ±
Office:	2,448 sq.ft. ±
Construction:	Brick/Metal
Ceiling Height:	16'
Docks/Drive-in:	7/ 1 (8'x10')
Column Spacing:	25' x 50'
Floors:	Concrete
Heat:	Overhead Gas
Lighting:	Metal Halide
Electric Power:	7500±A/240V/3PH
Security System:	Yes



**Clean manufacturing or warehouse space with heavy power.
Great location at I-271 and I-480. Full locker room facility and
cafeteria.**

contact information

Jeffrey A. Calig, CCIM x 210
jcalig@naidaus.com
David R. Hexter, SIOR x140
dhexter@naidaus.com
23240 Chagrin Blvd., Suite 250
Cleveland, OH 44122
www.naidaus.com
tel 216 831 3310
fax 216 831 9869



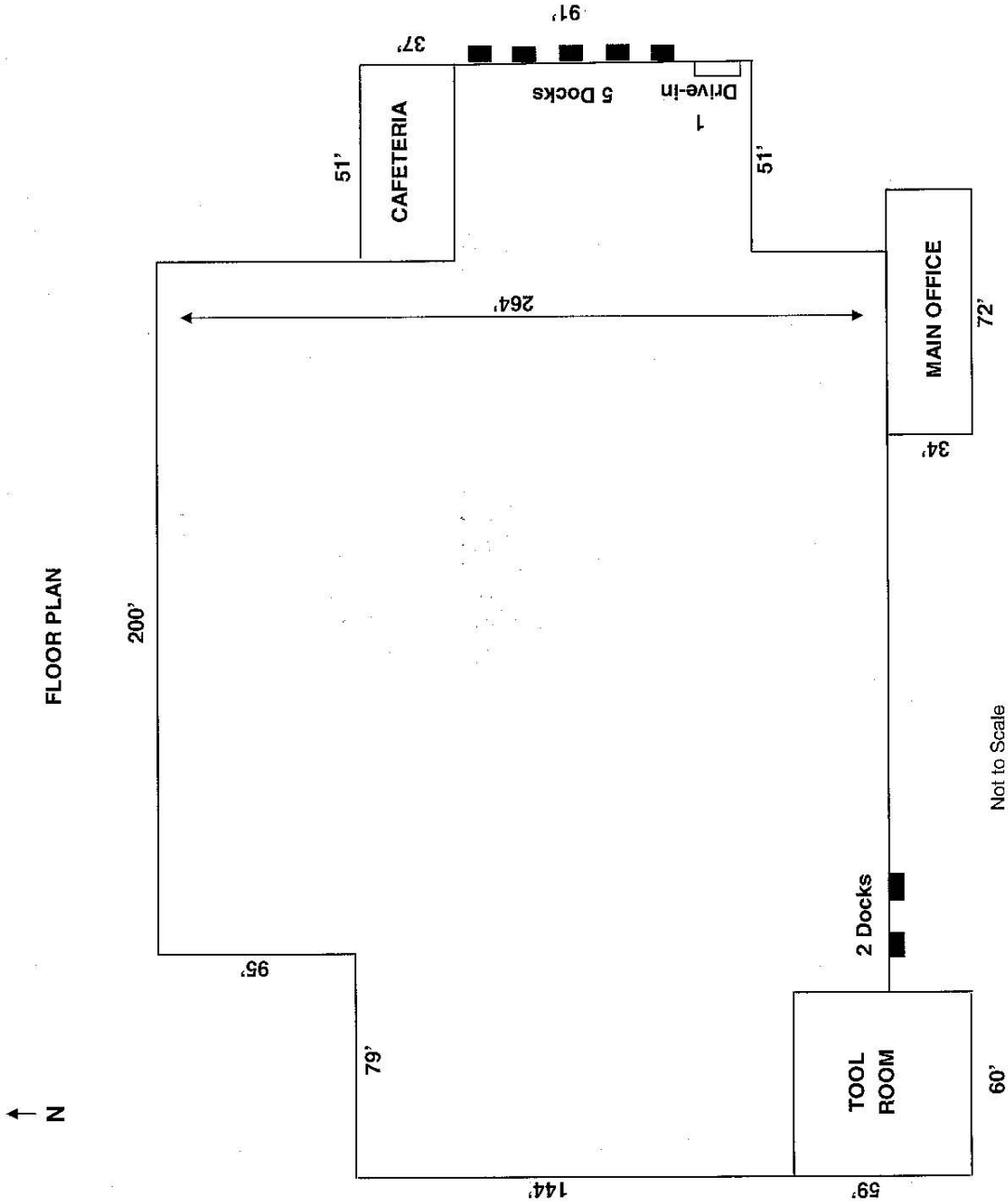
Commercial Real Estate Services, Worldwide.

Business Property Specialists, Inc. Broker

This information has been secured from sources we believe to be reliable, but we make no representations or warranties, expressed or implied, as to the accuracy of the information. References to condition, square footage or age are approximate. Buyer or Tenant acknowledges that they are relying on their own investigations and are not relying on Broker provided information.

26101 Fargo Ave. Floor Plan

Bedford Heights, Ohio



contact information

Jeffrey A. Calig, CCIM x 210

jcalig@naidaus.com

David R. Hexter, SIOR x140

dhexter@naidaus.com

23240 Chagrin Blvd., Suite 250

Cleveland, OH 44122

www.naidaus.com

tel 216 831 3310

fax 216 831 9869



Commercial Real Estate Services, Worldwide.

Business Property Specialists, Inc. Broker

This information has been secured from sources we believe to be reliable, but we make no representations or warranties, expressed or implied, as to the accuracy of the information. References to condition, square footage or age are approximate. Buyer or Tenant acknowledges that they are relying on their own investigations and are not relying on Broker provided information.

BUILDING INFORMATION SHEET

LOCATION:	26101 Fargo Ave.
TOTAL SQUARE FEET:	30,000 -77,167 sf
WAREHOUSE AREA:	74,719 sf
OFFICE AREA:	2,448 sf
CONSTRUCTION:	Brick/Metal
ZONING:	Industrial District
CEILING HEIGHT:	16'
TRUCK DOCKS:	7
DRIVE-IN DOORS:	1 (8' x 10')
COLUMN SPACING:	25' x 50'
FLOORS:	Concrete
PARKING:	Ample; 100% concrete
SPRINKLERED:	N/A
HEAT:	Overhead Gas
LIGHTING:	Metal Halide
ELECTRIC POWER:	7500± Amps/240V/3Ph
LEASE RATE:	\$2.75/sf Gross
SECURITY SYSTEM:	Yes
COMMENTS:	Clean manufacturing or warehouse space with heavy power. Great location at I-271 and I-480. Full locker room facility and cafeteria.

CONTACT:

David R. Hexter, SIOR 216-831-3310, ext. 140 dhexter@naidaus.com
Jeffrey A. Calig 216-831-3310, ext. 210 jcalig@naidaus.com



Commercial Real Estate Services, Worldwide.

Business Property Specialists, Inc., Broker

This information has been secured from sources we believe to be reliable, but we make no representations or warranties, expressed or implied, as to the accuracy of the information. References to square footage or age are approximate. Buyer must verify the information and bears all risk for any inaccuracies.