



For Lease

29001 Solon Road

Solon, Ohio

Property Description

Building Size:	22,000 sq.ft. ±
Warehouse:	19,600 sq.ft. ±
Office:	2,400 sq.ft. ±
Zoning:	U-7 Mfg.
Ceiling Height:	20' clear
Docks:	4 (3 w/levelers)
Drive-in Doors:	1 (16')
Year Built:	1972
Column Spacing:	32' x 40'
Sprinklered:	Yes
Electric Power:	240V/200A/3PH



New office space built in 2010. Sealed warehouse floor. Under new ownership. Great value in Solon's Premier Industrial District.

contact information

Jeffrey A. Calig, CCIM x 210
jcalig@naid.us.com
David R. Hexter, SIOR x140
dhexter@naid.us.com
23240 Chagrin Blvd., Suite 250
Cleveland, OH 44122
www.naid.us.com
tel 216 831 3310
fax 216 831 9869



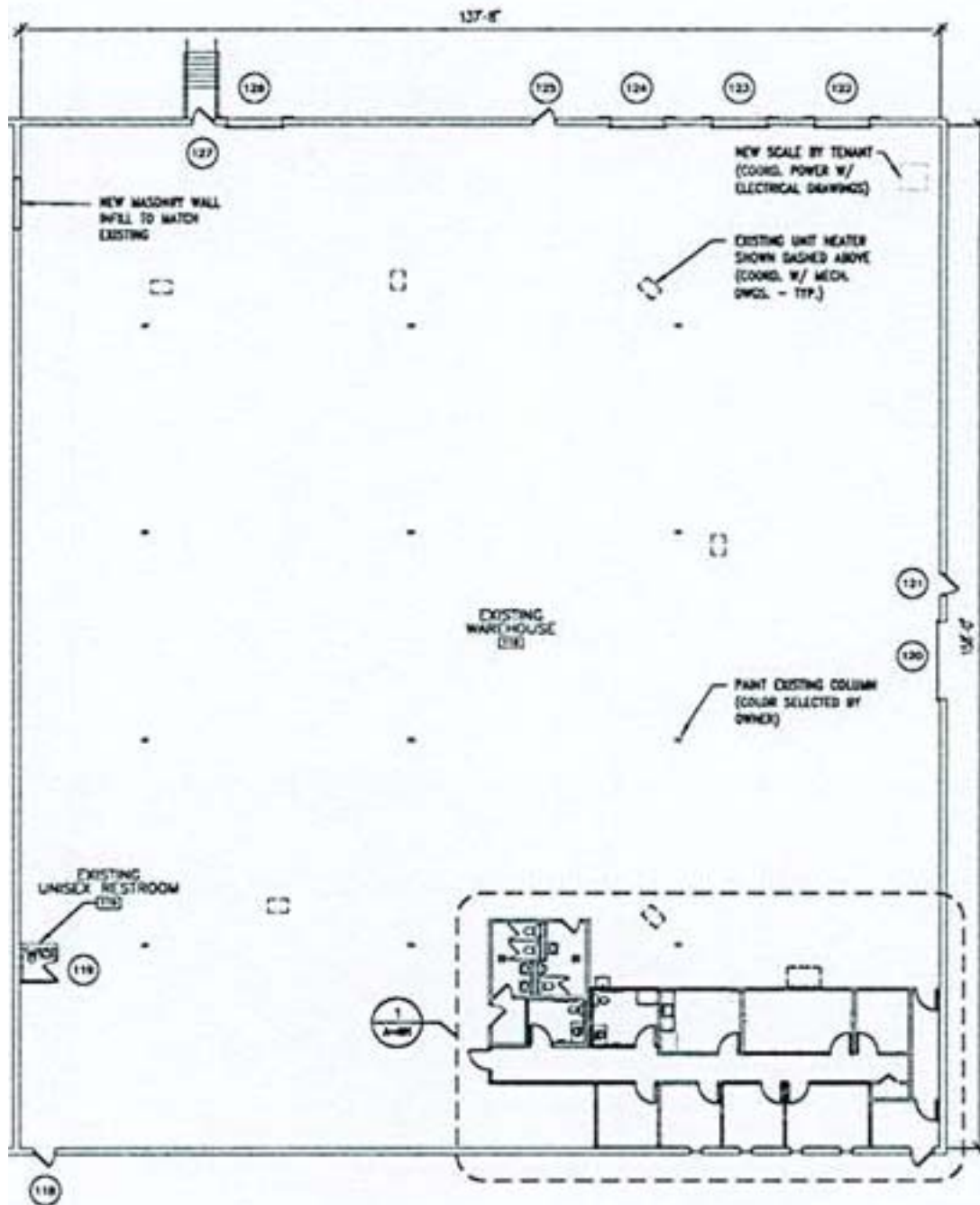
Commercial Real Estate Services, Worldwide.

Business Property Specialists, Inc. Broker

This information has been secured from sources we believe to be reliable, but we make no representations or warranties, expressed or implied, as to the accuracy of the information. References to condition, square footage or age are approximate. Buyer or Tenant acknowledges that they are relying on their own investigations and are not relying on Broker provided information.

29001 Solon Road Floor Plan

Solon, Ohio



contact information

Jeffrey A. Calig, CCIM x 210

jcalig@naid.us

David R. Hexter, SIOR x140

dhexter@naid.us

23240 Chagrin Blvd., Suite 250

Cleveland, OH 44122

www.naid.us

tel 216 831 3310

fax 216 831 9869

NAIDaus

Commercial Real Estate Services, Worldwide.

Business Property Specialists, Inc. Broker

This information has been secured from sources we believe to be reliable, but we make no representations or warranties, expressed or implied, as to the accuracy of the information. References to condition, square footage or age are approximate. Buyer or Tenant acknowledges that they are relying on their own investigations and are not relying on Broker provided information.

BUILDING INFORMATION SHEET

LOCATION: 29001 Solon Rd., Solon, OH
SPACE AVAILABLE: 22,000 SF
WAREHOUSE AREA: 19,600 SF
OFFICE AREA: 2,400 SF
CONSTRUCTION: Masonry and pre-cast concrete
YEAR BUILT: 1972
ZONING: U-7 Manufacturing
CEILING HEIGHT: 20' clear
TRUCK DOCKS: 4 (3 with levelers)
DRIVE-IN DOORS: 1 (16')
COLUMN SPACING: 32' x 40'
FLOORS: Concrete
PARKING: 40 plus
SPRINKLERED: Yes
HEAT: Overhead Gas
LIGHTING: T5 High Energy Efficient
ELECTRIC POWER: 240V/200A/3PH
LEASE RATE: \$4.25/SF MG
SECURITY SYSTEM: Yes
COMMENTS: New office space built in 2010. Sealed warehouse floor. Under new ownership. Great value in Solon's Premier Industrial District.
CONTACT:

David R. Hexter, SIOR 216-831-3310 x140 dhexter@naidaus.com
Jeffrey A. Calig, CCIM 216-831-3310 x210 jcalig@naidaus.com



Commercial Real Estate Services, Worldwide.

Business Property Specialists, Inc., Broker

This information has been secured from sources we believe to be reliable, but we make no representations or warranties, expressed or implied, as to the accuracy of the information. References to square footage or age are approximate. Buyer must verify the information and bears all risk for any inaccuracies.