



For Sale - 11,721 sf Building at I-271/I-480

4535 Renaissance Parkway

Warrensville Heights, Ohio

Property Description

Building Size: 11,721 sq. ft. ±

Warehouse: 4,288 sq. ft. ±

Office: 7,433 sq. ft. ±

Year Built: 1985,1994

Land: .93 acres

Zoning: Limited Industrial

Clear Height: 16'

Construction: Brick/Block

Drive-in Doors: 2 (10' x 10')

Parking: 42 spaces

Comments: Can convert warehouse to indoor parking garage.



Commercial Real Estate Services, Worldwide.

Business Property Specialists, Inc. Broker

contact information

David R. Hexter, SIOR x140
dhexter@naidaus.com

Jeffrey A. Calig, CCIM x 210
jcalig@naidaus.com

3401 Enterprise Pkw., #105
Cleveland, OH 44122

www.naidaus.com

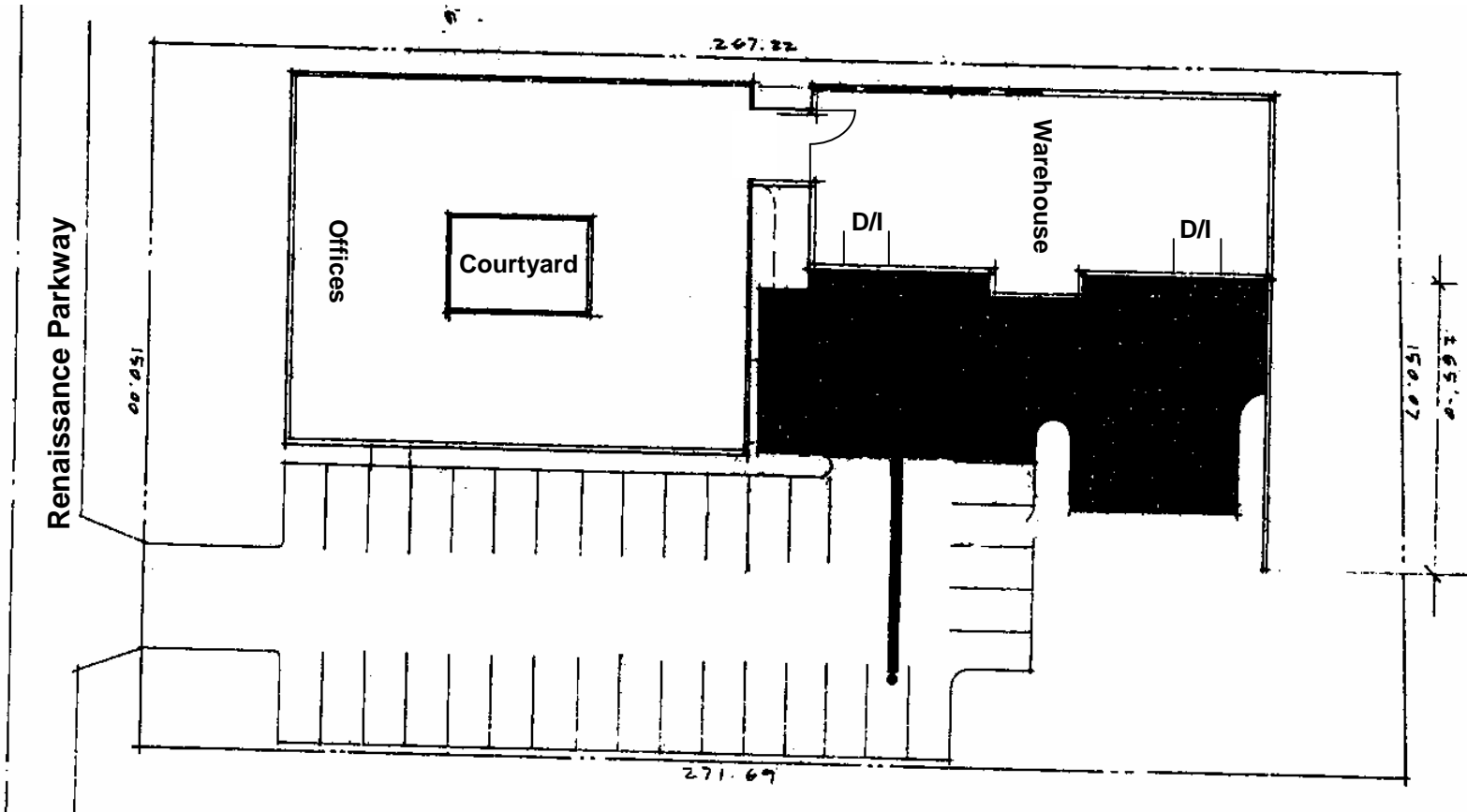
tel 216 831 3310

fax 216 831 9869

This information has been secured from sources we believe to be reliable, but we make no representations or warranties, expressed or implied, as to the accuracy of the information. References to condition, square footage or age are approximate. Buyer or Tenant acknowledges that they are relying on their own investigations and are not relying on Broker provided information.

4535 Renaissance Parkway Site Plan

Waresville Heights, Ohio



11,721 sf Building for Sale

NAIDaus

Commercial Real Estate Services, Worldwide.

Business Property Specialists, Inc. Broker

contact information

David R. Hexter, SIOR

Jeffrey A. Calig, CCIM

3401 Enterprise Pkw., #105

Cleveland, OH 44122

www.naidaus.com

tel 216 831 3310

fax 216 831 9869

This information has been secured from sources we believe to be reliable, but we make no representations or warranties, expressed or implied, as to the accuracy of the information. References to condition, square footage or age are approximate. Buyer or Tenant acknowledges that they are relying on their own investigations and are not relying on Broker provided information.