



**For Lease**  
**750 Alpha Drive**  
 Highland Heights, Ohio



Property Description	
Available:	24,934 sq.ft. ±
Warehouse:	17,242 sq.ft. ±
Office:	7,692 sq.ft. ±
Ceiling Height:	19'
Docks:	2 (10')
Drive-in:	1 (13')
Year Built:	1971
Sprinklered:	Yes
Cranes:	10 Ton
Lighting:	Metal halide
Parking:	40+

**Very well kept building with great highway access. Former athletic training facility and still ideal for this use or for a clean office warehouse environment. Office can be removed for more warehouse space.**

**contact information**  
 Jeffrey A. Calig, CCIM x 210  
[jcalig@naidaus.com](mailto:jcalig@naidaus.com)  
 David R. Hexter, SIOR x140  
[dhexter@naidaus.com](mailto:dhexter@naidaus.com)  
 23240 Chagrin Blvd., Suite 250  
 Cleveland, OH 44122  
[www.naidaus.com](http://www.naidaus.com)  
 tel 216 831 3310  
 fax 216 831 9869



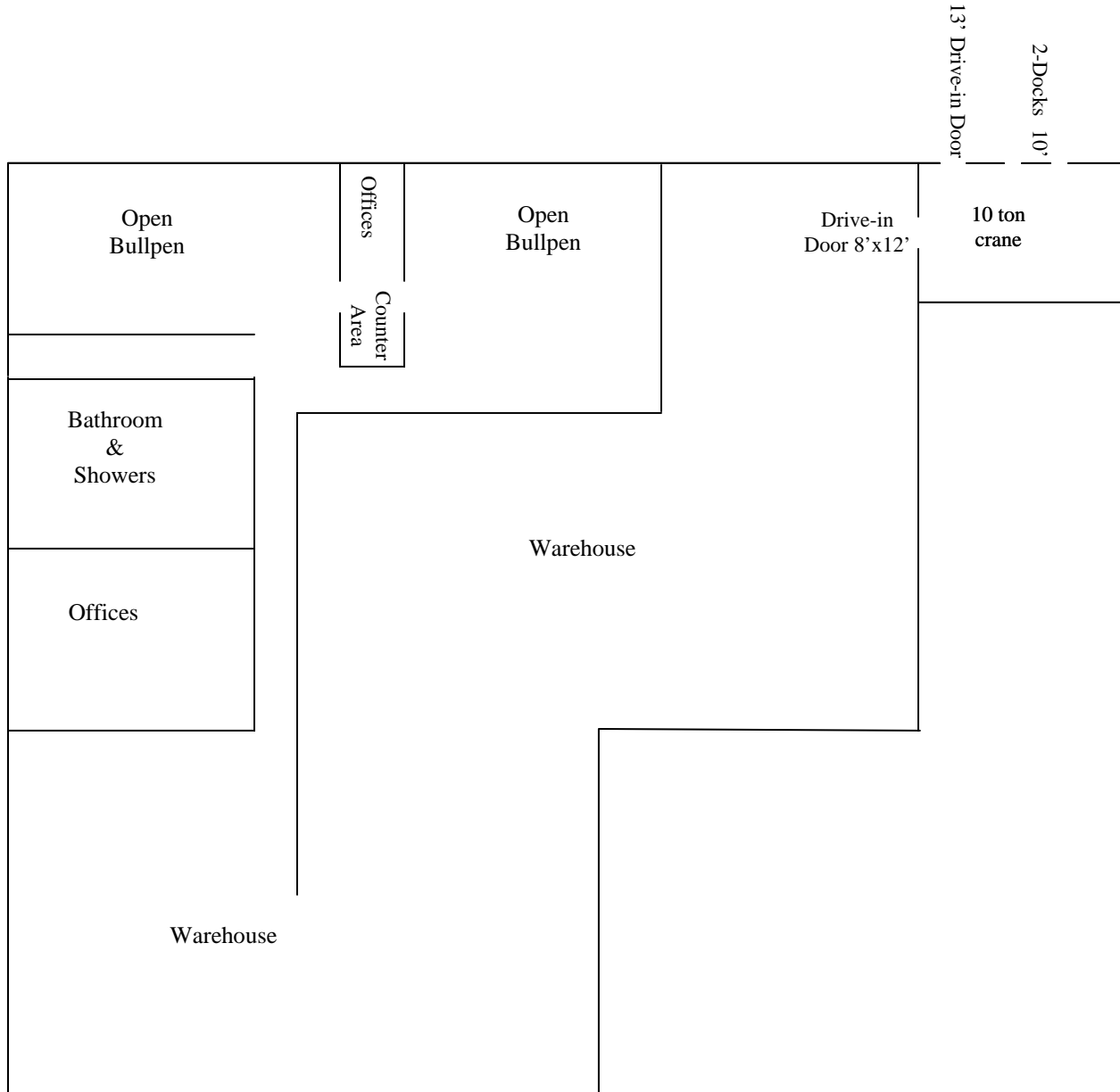
Commercial Real Estate Services, Worldwide.

Business Property Specialists, Inc. Broker

This information has been secured from sources we believe to be reliable, but we make no representations or warranties, expressed or implied, as to the accuracy of the information. References to condition, square footage or age are approximate. Buyer or Tenant acknowledges that they are relying on their own investigations and are not relying on Broker provided information.

# 750 Alpha Drive Floor Plan

Highland Heights, Ohio



## Industrial For Lease

### contact information

Jeffrey A. Calig, CCIM x 210  
jcalig@naidaus.com  
David R. Hexter, SIOR x140  
dhexter@naidaus.com  
23240 Chagrin Blvd., Suite 250  
Cleveland, OH 44122  
www.naidaus.com  
tel 216 831 3310  
fax 216 831 9869



Commercial Real Estate Services, Worldwide.  
Business Property Specialists, Inc. Broker

This information has been secured from sources we believe to be reliable, but we make no representations or warranties, expressed or implied, as to the accuracy of the information. References to condition, square footage or age are approximate. Buyer or Tenant acknowledges that they are relying on their own investigations and are not relying on Broker provided information.

## BUILDING INFORMATION SHEET

**LOCATION:** 750 Alpha Drive, Highland Heights, Ohio  
**TOTAL SQUARE FEET:** 24,934 sq. ft.  
**WAREHOUSE AREA:** 17,242 sq. ft.  
**OFFICE AREA:** 7,692 sq. ft.  
**CONSTRUCTION:** Brick/Block  
**YEAR BUILT:** 1971  
**ZONING:** Park, Commercial, Manufacturing  
**CLEAR HEIGHT:** 19'  
**TRUCK DOCKS:** Two (10')  
**DRIVE-IN DOORS:** One (13')  
**CRANES:** 10 Ton  
**PARKING:** 40+  
**SPRINKLERED:** Yes  
**HEAT:** Infra red gas and HVAC  
**LIGHTING:** Metal halide  
**ELECTRIC POWER:** 480V/225 amp/3 phase  
**TAXES:** \$.80/sf  
**FLOOR DRAINS:** Yes  
**COMMENTS:** Very well kept building with great highway access. Former athletic training facility and still ideal for this use or for a clean office warehouse environment. Office can be removed for more warehouse area.

**CONTACT:** Jeffrey A. Calig, CCIM direct dial: 216-455-0910 jcalig@naidaus.com  
David R. Hexter, SIOR direct dial: 216-455-0890 dhexter@naidaus.com



Commercial Real Estate Services, Worldwide.

Business Property Specialists, Inc., Broker

This information has been secured from sources we believe to be reliable, but we make no representations or warranties, expressed or implied, as to the accuracy of the information. References to square footage or age are approximate. Buyer must verify the information and bears all risk for any inaccuracies.