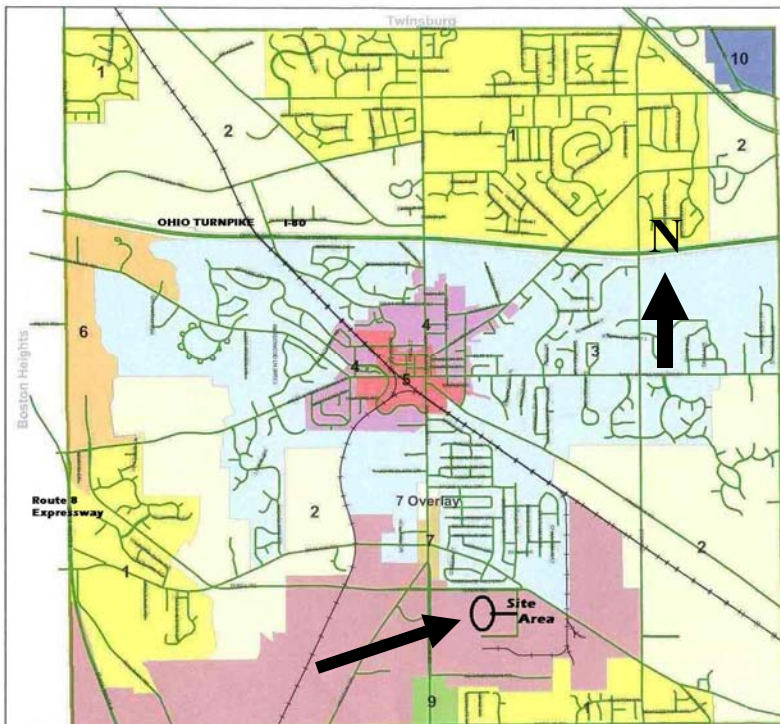




**For Sale**  
**1570 Terex Road**  
 Hudson, Ohio

**Property Description**

<b>Building Size:</b>	51,380 sq.ft. ±
<b>Warehouse:</b>	48,680sq.ft. ±
<b>Office:</b>	2,700 sq.ft. ±
<b>Contiguous Land:</b>	14 Acres ±:
Building site	2 ac
Paved, Fenced	6 ac
Expansion land	4 ac
Improved ind. site	2 ac
<b>Ceiling Height:</b>	16'
<b>Drive-in Doors</b>	6 plus 6 auxiliary
<b>Truck Docks</b>	1
<b>Access:</b>	I-80, I-271, I-480, SR-8 Expressway
<b>Year built</b>	1997
<b>Zoning:</b>	District 8, Industrial
<b>Construction Type</b>	Split-faced block pitched metal roof
<b>Price:</b>	TBA



Commercial Real Estate Services, Worldwide.

*Business Property Specialists, Inc. Broker*

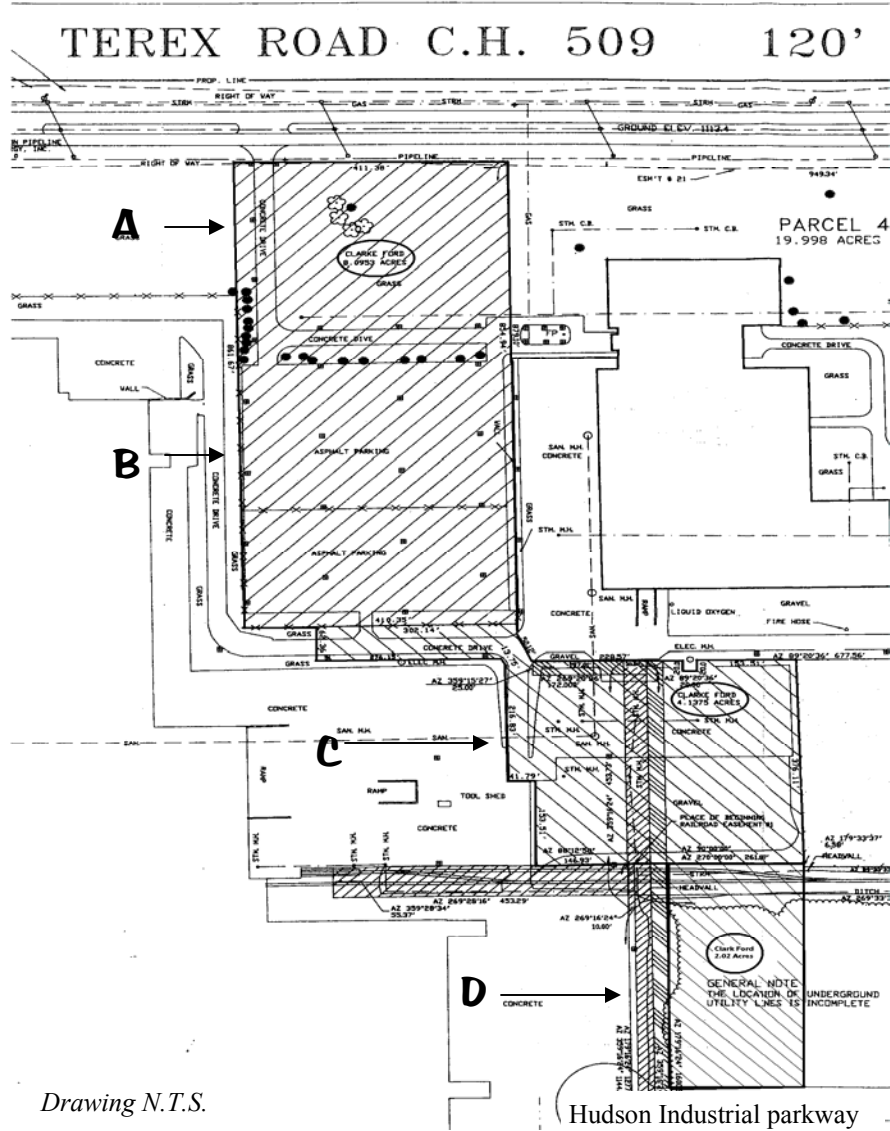
This information has been secured from sources we believe to be reliable, but we make no representations or warranties, expressed or implied, as to the accuracy of the information. References to condition, square footage or age are approximate. Buyer or Tenant acknowledges that they are relying on their own investigations and are not relying on Broker provided information.

**contact information**

**A. William McGraw**  
 Vice President  
 3401 Enterprise Pkw., #105  
 Cleveland, OH 44122  
[www.naidaus.com](http://www.naidaus.com)  
 tel 216 233 2837  
 fax 216 831 9869

# 1570 Terex Road Site Plan

Hudson, Ohio



## Industrial Facility For Sale

### Site Summary (Approximate)

Total Acreage:	14 acres
A. Building Site:	2 acres
B. Paved Parking:	6 acres
C. Stone Parking:	4 acres
D. Alt. Access Site:	2 acres

# NAIDaus

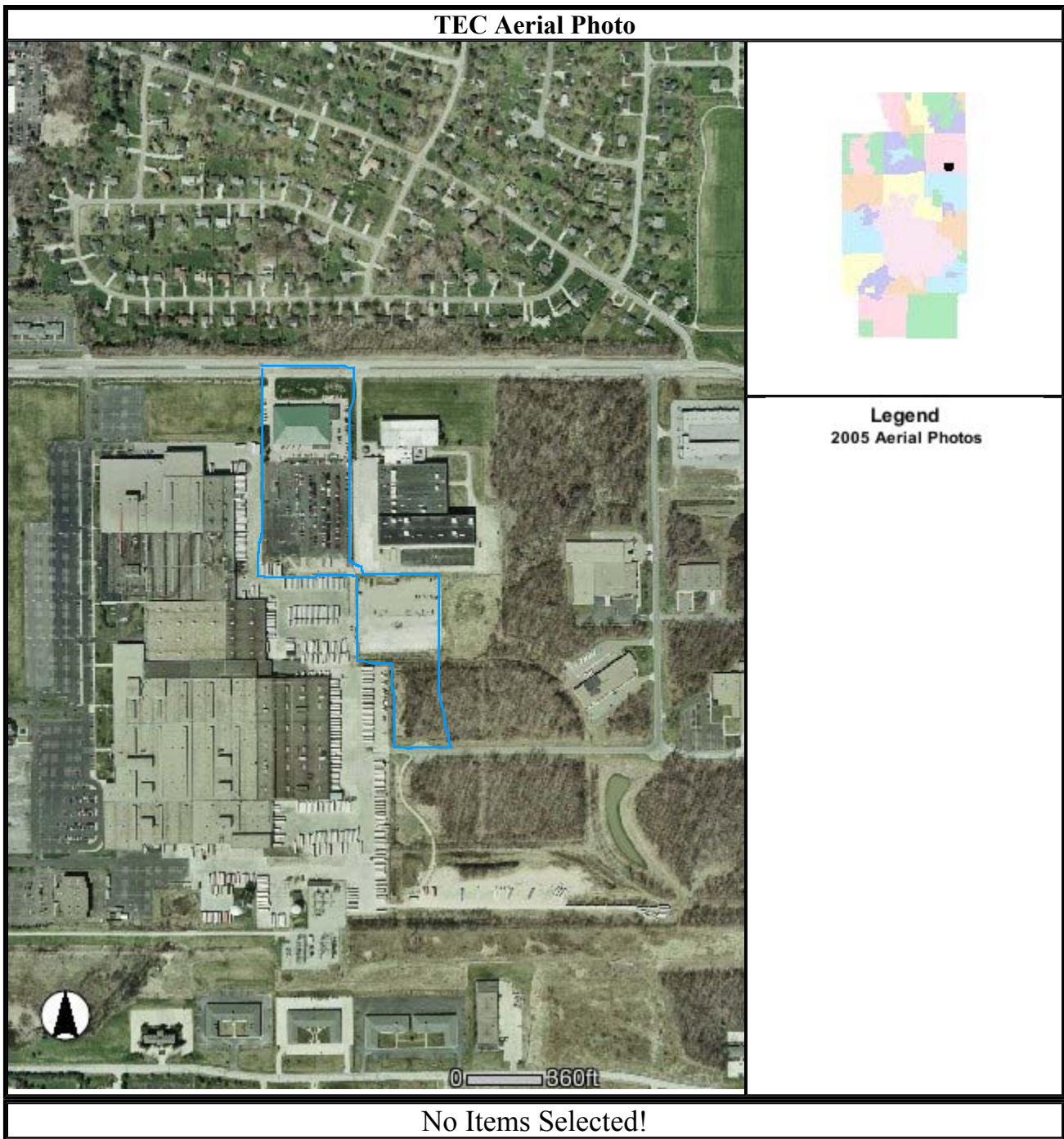
Commercial Real Estate Services, Worldwide.

Business Property Specialists, Inc. Broker

This information has been secured from sources we believe to be reliable, but we make no representations or warranties, expressed or implied, as to the accuracy of the information. References to condition, square footage or age are approximate. Buyer or Tenant acknowledges that they are relying on their own investigations and are not relying on Broker provided information.

### contact information

**A. William McGraw**  
Vice President  
3401 Enterprise Pkw., #105  
Cleveland, OH 44122  
www.naidaus.com  
Cell: 216 233 2837  
fax 216 831 9869



John A. Donofrio, **Fiscal Officer**  
Greg Bachman, P.E., P.S., **Engineer**  
Russell M. Pry, **Executive**



[PRINT](#)