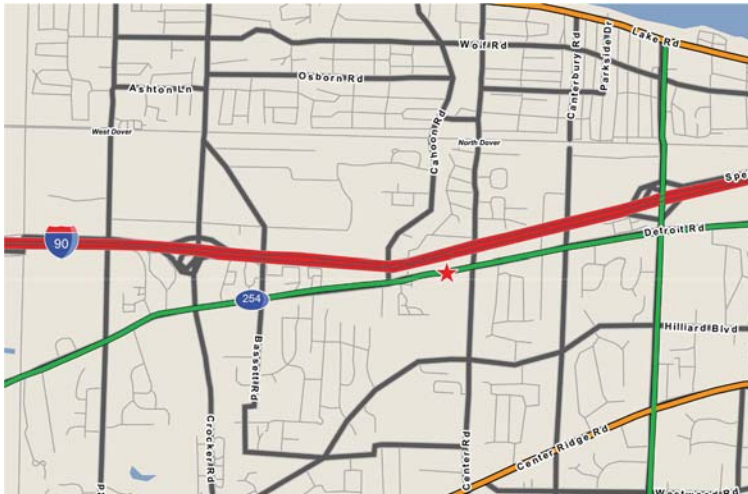


27402 Detroit Road

Land For Sale

Westlake, OH 44145



Property Features

- Available: 1.33 Acres
- 222 feet of frontage on Detroit Rd.
- Frontage on Interstate 90
- D6, D2, D2x Liquor License
- Zoned: General Business
- Traffic Count: 18,780 VPD on Detroit Rd.



Commercial Real Estate Services, Worldwide.
Business Property Specialists, Inc. Broker

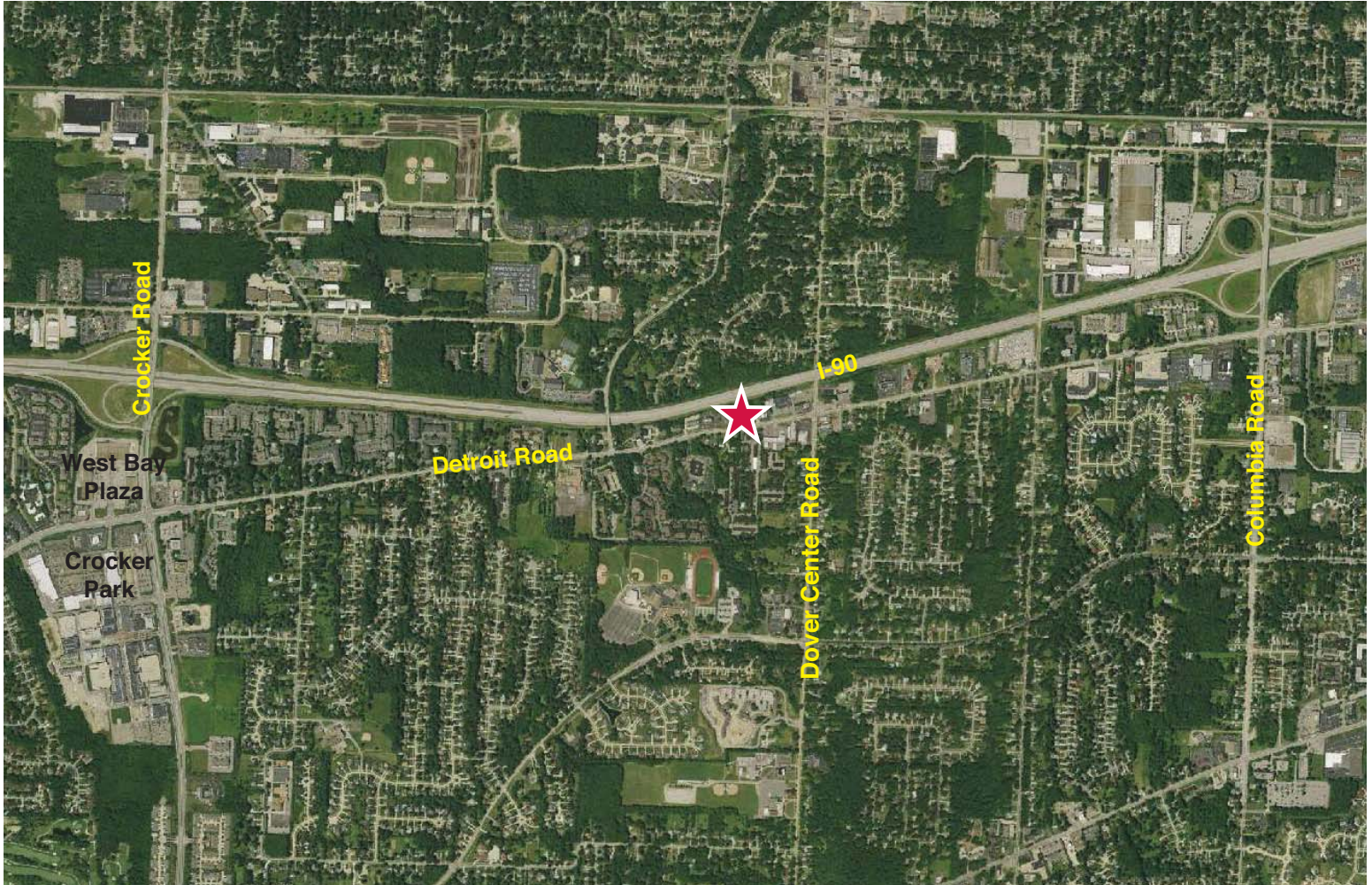
This information has been secured from sources we believe to be reliable, but we make no representations or warranties, expressed or implied, as to the accuracy of the information. References to square footage or age are approximate. Buyer must verify the information and bears all risk for any inaccuracies.

Contact Information

Chris Seelig, Sr. Vice President
23240 Chagrin Blvd, Suite 250
Cleveland, OH 44122
216 455 0926

www.naidaus.com

27402 Detroit Road
Land For Sale
 Westlake, OH 44145



Demographics 2009	1 Mile	3 Miles	5 Miles
Population	6,731	55,222	130,366
Households	2,948	22,869	54,661
Average Household Income	\$95,051	\$99,205	\$88,859
Total Number of Employees	7,755	32,973	74,233



Commercial Real Estate Services, Worldwide.
 Business Property Specialists, Inc. Broker

Contact Information

Chris Seelig, Sr. Vice President
 23240 Chagrin Blvd, Suite 250
 Cleveland, OH 44122
 216 455 0926

www.naidaus.com

This information has been secured from sources we believe to be reliable, but we make no representations or warranties, expressed or implied, as to the accuracy of the information. References to square footage or age are approximate. Buyer must verify the information and bears all risk for any inaccuracies.