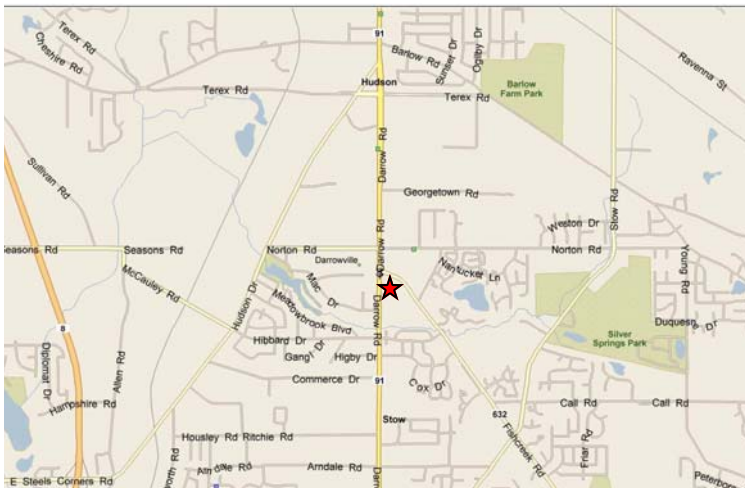




1,400 +/- SF Retail Space Available
4963 Darrow Road
 Stow, Ohio 44224

Property Description

- Approximately 1400 SF of great retail space between Bruegger's Bagels & Great Clips.
- Located Just South of the Stow Hudson Border
- Great visibility on Darrow Road (SR 91)
- Traffic Count: 18,200.
- Daytime population of over 51,000 employees with in 5 miles of the center.
- Best small space in area.



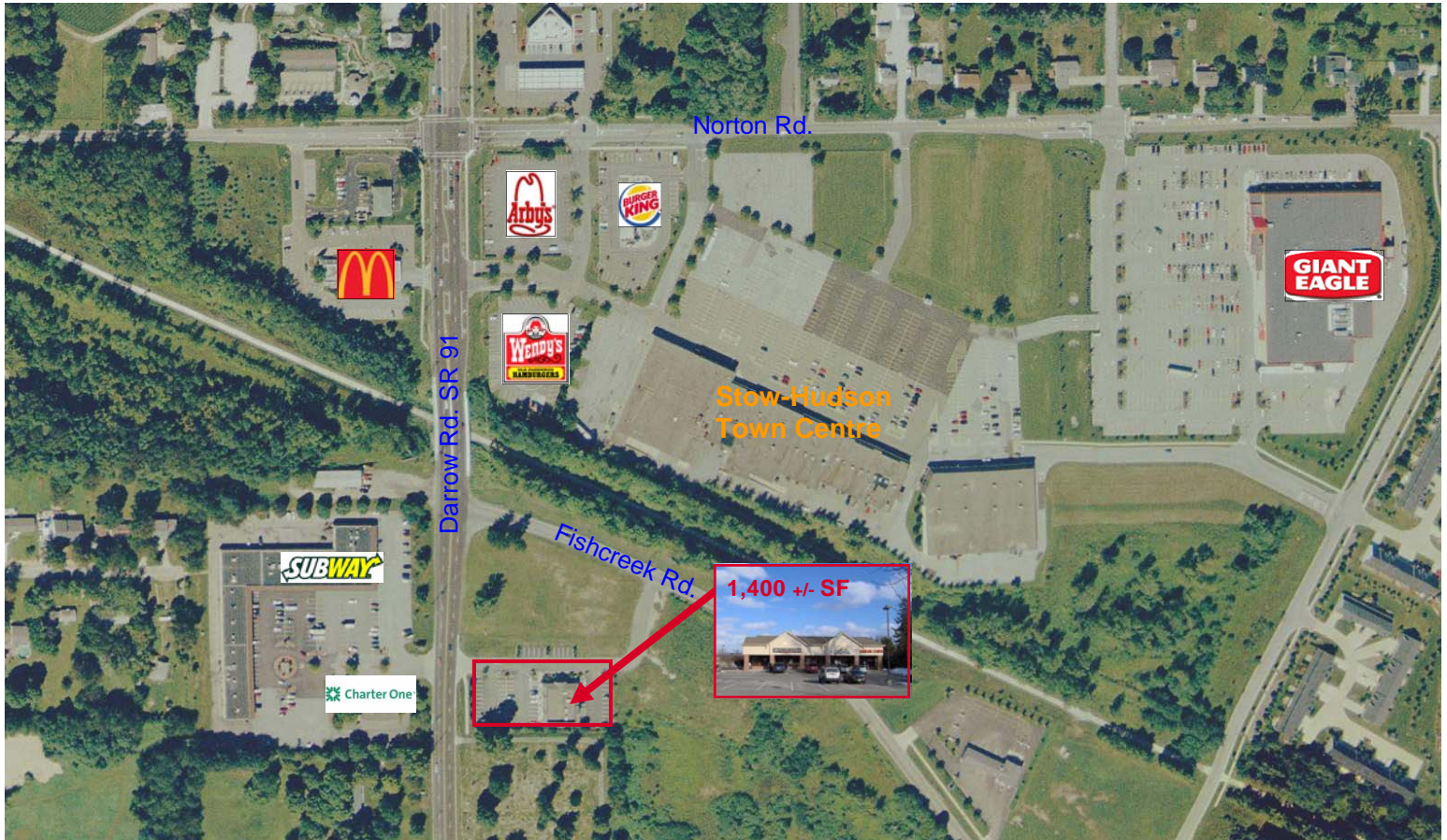
Commercial Real Estate Services, Worldwide.
 Business Property Specialists, Inc. Broker

This information has been secured from sources we believe to be reliable, but we make no representations or warranties, expressed or implied, as to the accuracy of the information. References to condition, square footage or age are approximate. Buyer or Tenant acknowledges that they are relying on their own investigations and are not relying on Broker provided information.

contact information

Chris Seelig, Vice President
 Director of Retail Services
 23240 Chagrin Blvd., Ste. 250
 Cleveland, OH 44122
www.naidaus.com
 P 216 831 3310 ext. 126
 D 216 455 0926
 F 216 831 9869
cseelig@naidaus.com

Aerial 4963 Darrow Road Stow, Ohio



Demographics: (1, 3, 5 mile radius/ 2008 estimate)

Population: 5,201 / 41,681 / 99,957

Ave. Household Income: \$68,664 / \$89,526 / \$85,547

contact information

Chris Seelig, Vice President
Director of Retail Services
23240 Chagrin Blvd., Ste. 250
Cleveland, OH 44122
www.naidaus.com
P 216 831 3310 ext. 126
D 216 455 0926
F 216 831 9869
cseelig@naidaus.com



Commercial Real Estate Services, Worldwide.

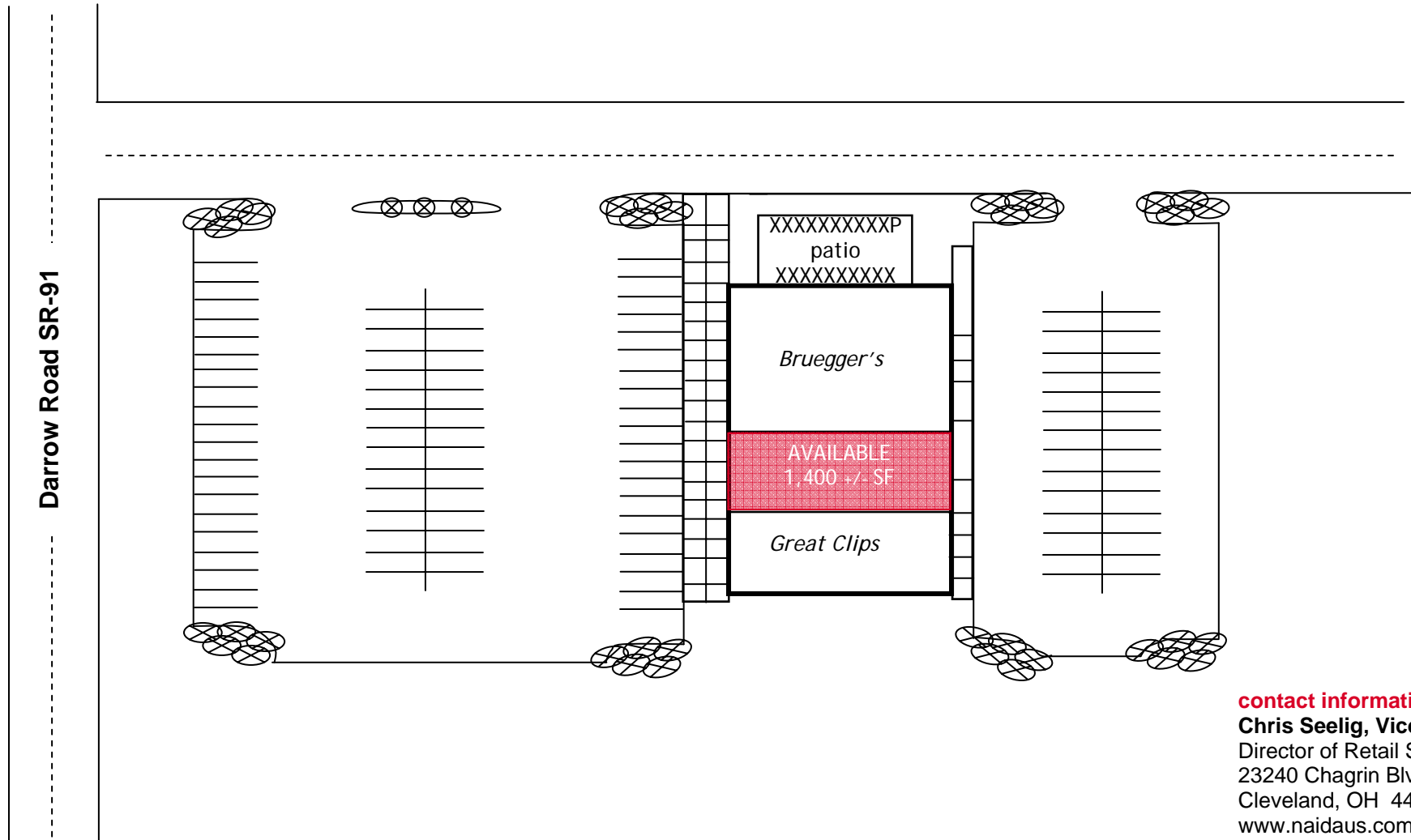
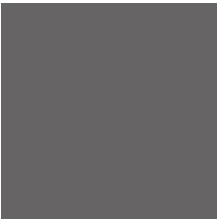
Business Property Specialists, Inc. Broker

This information has been secured from sources we believe to be reliable, but we make no representations or warranties, expressed or implied, as to the accuracy of the information. References to condition, square footage or age are approximate. Buyer or Tenant acknowledges that they are relying on their own investigations and are not relying on Broker provided information.

Site Plan

4963 Darrow Road (SR 91)

Stow, OH



contact information

Chris Seelig, Vice President
Director of Retail Services
23240 Chagrin Blvd., Ste. 250
Cleveland, OH 44122
www.naidaus.com
P 216 831 3310 ext. 126
D 216 455 0926
F 216 831 9869
cseelig@naidaus.com



Commercial Real Estate Services, Worldwide.
Business Property Specialists, Inc. Broker

This information has been secured from sources we believe to be reliable, but we make no representations or warranties, expressed or implied, as to the accuracy of the information. References to condition, square footage or age are approximate. Buyer or Tenant acknowledges that they are relying on their own investigations and are not relying on Broker provided information.