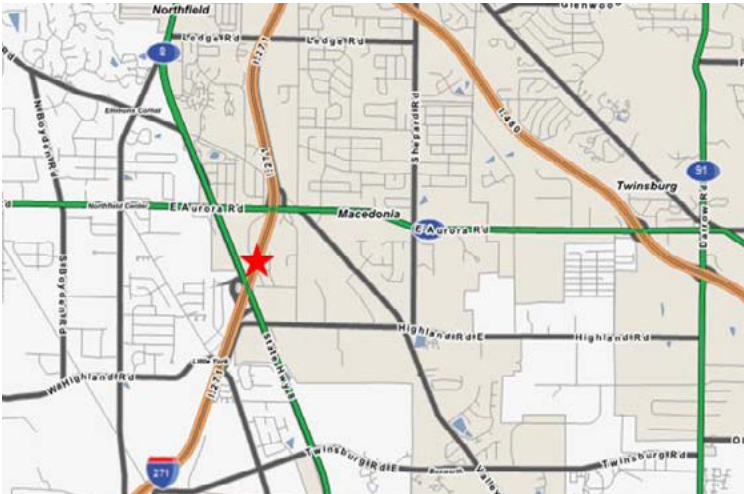


6876 Macedonia Commons Blvd. Retail/Restaurant For Lease

Macedonia, OH



Property Features

- 2,446 ±SF Freestanding Restaurant/Retail Building with Drive-Thru Window
- 0.5877 Acre Lot (25,600 ±SF)
- Property also Available For Sale
- Out Parcel to 577,000 ±SF Macedonia Commons
- Anchored by Kohls, Walmart, Cinemark, Home Depot, and Hobby Lobby
- Regional Retail Area between SR 8 and SR 82 exits on I-271
- Great freeway visibility to I-271



Commercial Real Estate Services, Worldwide.
Business Property Specialists, Inc. Broker

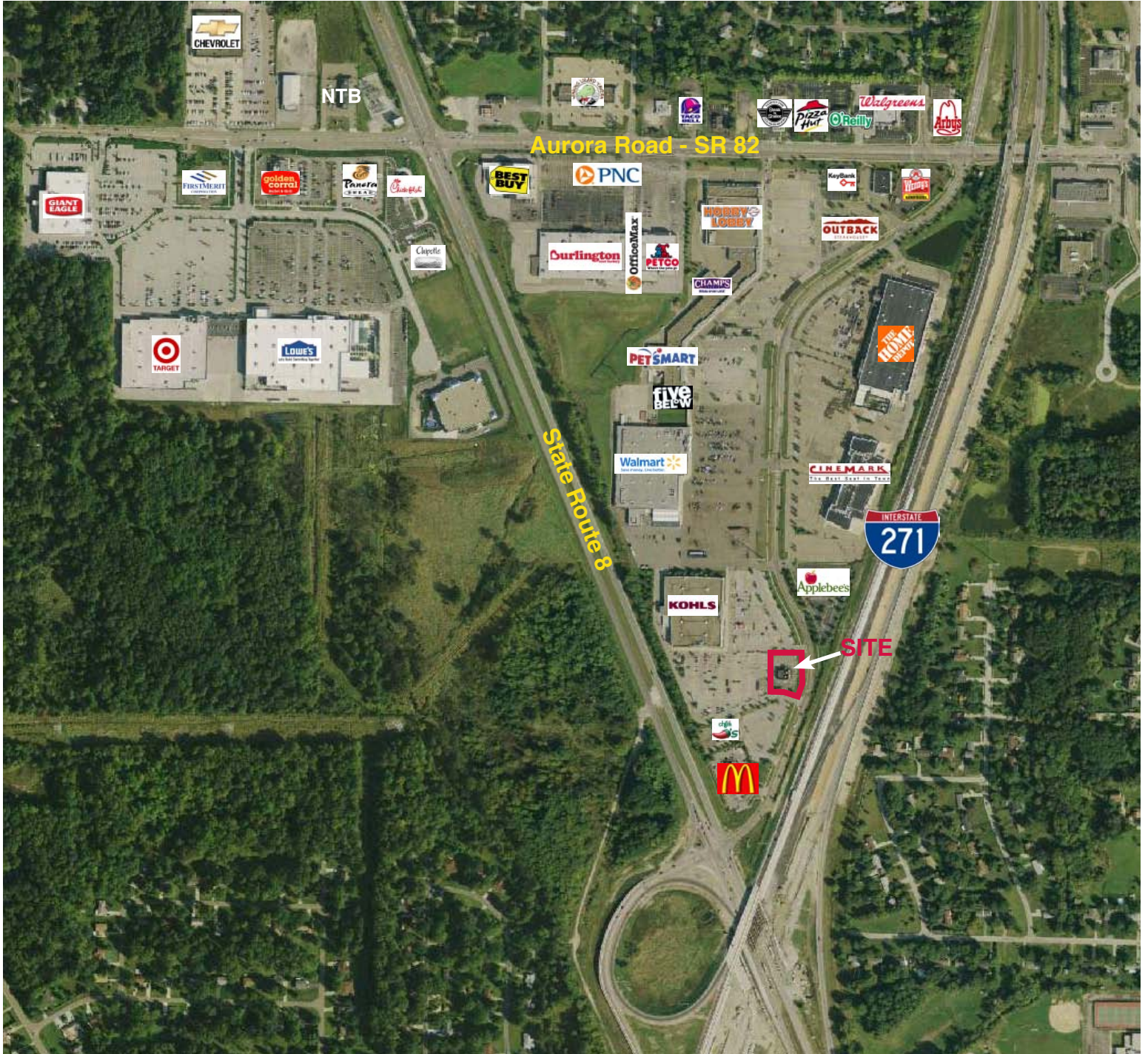
This information has been secured from sources we believe to be reliable, but we make no representations or warranties, expressed or implied, as to the accuracy of the information. References to square footage or age are approximate. Buyer must verify the information and bears all risk for any inaccuracies.

Contact Information

Chris Seelig, Senior Vice President
216 455 0926 | cseelig@naidaus.com
23240 Chagrin Blvd., Suite 250
Cleveland, OH 44122
www.naidaus.com

6876 Macedonia Commons Blvd. Retail/Restaurant For Lease

Macedonia, OH



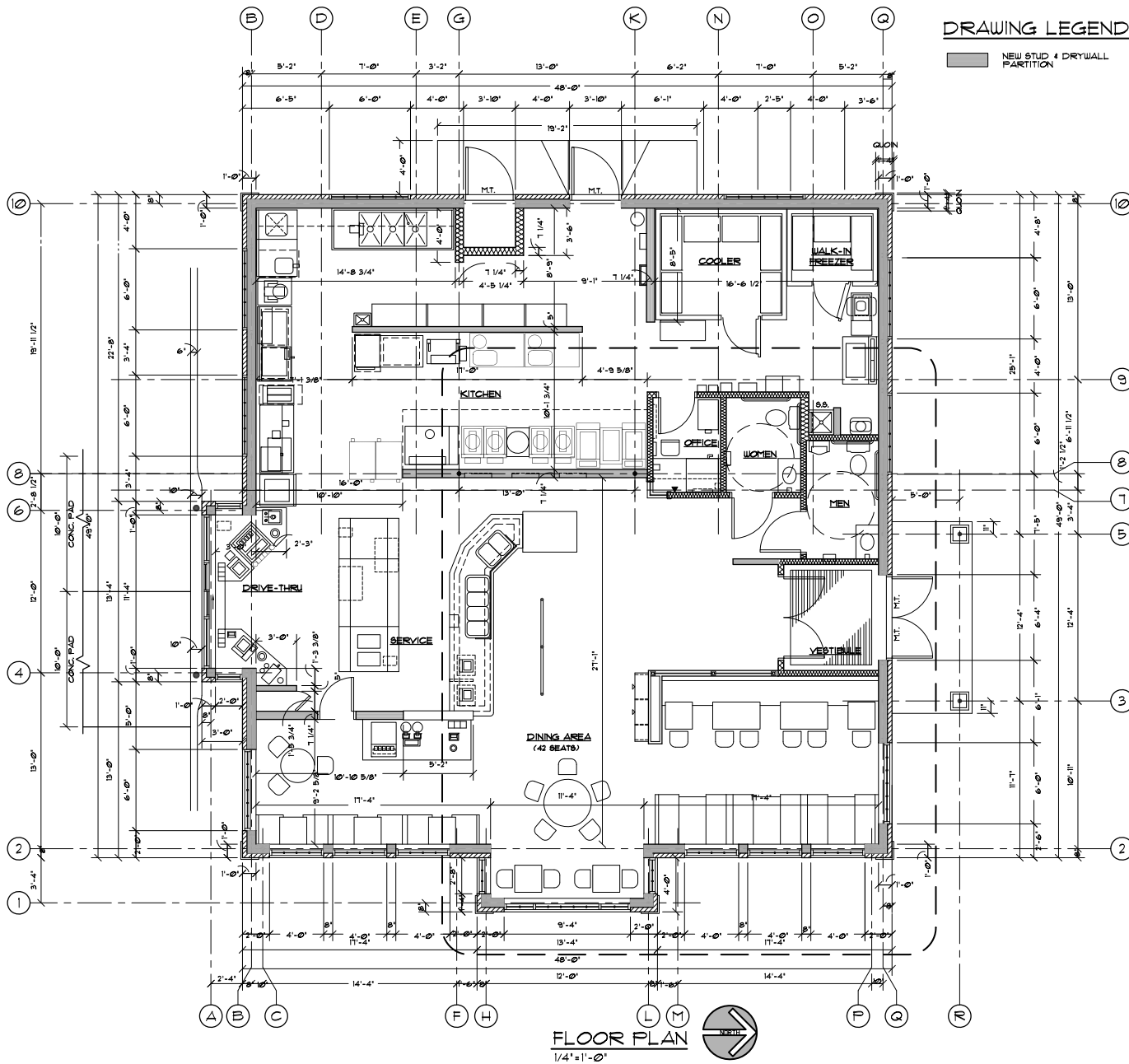
Commercial Real Estate Services, Worldwide.
Business Property Specialists, Inc. Broker

This information has been secured from sources we believe to be reliable, but we make no representations or warranties, expressed or implied, as to the accuracy of the information. References to square footage or age are approximate. Buyer must verify the information and bears all risk for any inaccuracies.

Contact Information

Chris Seelig, Senior Vice President
216 455 0926 | cseelig@naidaus.com
23240 Chagrin Blvd., Suite 250
Cleveland, OH 44122
www.naidaus.com

6876 Macedonia Commons Blvd. Retail/Restaurant For Lease Macedonia, OH



REVISIONS	BY
CHANGES PER OWNER & CITY REVIEW 2.2.21	

**NEW KFC RESTAURANT #8
MACEDONIA COMMONS SHOPPING CENTER - (S.R. 8 & 82)
MACEDONIA COMMONS BOULEVARD - (OUTLOT "F")
MACEDONIA, OHIO 44056**

APPLEBROOK DESIGN

68276 Baberick Road
Building A Suite 1
Solon, Ohio 44188
PH (216) 498-0000
FAX (216) 498-0002

DRAWN MR. D.B. SA.
CHECKED S.A. UR.
DATE 2-23-21
SCALE AS NOTED
JOB NO. 18786
SHEET A-3
OF 46 SHEETS



Commercial Real Estate Services, Worldwide.
Business Property Specialists, Inc. Broker

This information has been secured from sources we believe to be reliable, but we make no representations or warranties, expressed or implied, as to the accuracy of the information. References to square footage or age are approximate. Buyer must verify the information and bears all risk for any inaccuracies.

Contact Information
Chris Seelig, Senior Vice President
216 455 0926 | cseelig@naidaus.com
23240 Chagrin Blvd., Suite 250
Cleveland, OH 44122
www.naidaus.com

Summary Profile

1990 - 2000 Census, 2009 Estimates with 2014 Projections
 Calculated using Proportional Block Groups



Commercial Real Estate Services, Worldwide.
 Business Property Specialists, Inc. Broker

Lat/Lon: 41.30738/-81.51663

6876 Macedonia Commons Blvd		3 Miles	5 Miles	7 Miles
Macedonia, OH				
POPULATION	2009 Estimated Population	31,775	65,614	128,043
	2014 Estimated Population	31,416	65,460	125,034
	2000 Census Population	27,926	60,296	125,274
	1990 Census Population	22,438	45,808	105,065
	Historical Annual Growth 1990 to 2009	2.2%	2.3%	1.2%
	Projected Annual Growth 2009 to 2014	-0.2%	-	-0.5%
	2009 Median Age	39.8	39.8	40.7
HOUSEHOLDS	2009 Estimated Households	12,437	25,366	50,758
	2014 Projected Households	12,678	26,277	52,168
	2000 Census Households	10,724	22,732	48,398
	1990 Census Households	7,938	16,333	39,003
	Historical Annual Growth 1990 to 2009	3.0%	2.9%	1.6%
	Projected Annual Growth 2009 to 2014	0.4%	0.7%	0.6%
POPULATION BY RACE	2009 Estimated White	88.1%	84.6%	82.3%
	2009 Estimated Black or African American	9.1%	12.1%	13.9%
	2009 Estimated Asian & Pacific Islander	1.8%	2.2%	2.6%
	2009 Estimated American Indian & Native Alaskan	-	-	-
	2009 Estimated Other Races	0.2%	0.2%	0.2%
	2009 Estimated Hispanic	1.2%	1.4%	1.4%
INCOME	2009 Estimated Average Household Income	\$81,372	\$87,201	\$86,449
	2009 Estimated Median Household Income	\$78,801	\$82,823	\$80,336
	2009 Estimated Per Capita Income	\$31,894	\$34,032	\$34,630
EDUCATION (AGE 25+)	2009 Elementary	1.4%	1.5%	1.7%
	2009 Some High School	6.8%	6.8%	6.9%
	2009 High School Graduate	49.4%	40.5%	37.8%
	2009 Some College	26.8%	24.4%	23.5%
	2009 Associates Degree Only	11.5%	10.8%	10.3%
	2009 Bachelors Degree Only	32.8%	32.5%	31.2%
	2009 Graduate Degree	14.0%	17.1%	19.4%
BUSINESS	Number of Businesses	1,368	3,039	6,564
	Total Number of Employees	21,819	50,818	108,884
	Employee Population per Business	16.0	16.7	16.6
	Residential Population per Business	23.2	21.6	19.5

This report was produced using data from private and government sources deemed to be reliable. The information herein is provided without representation or warranty.

This information has been secured from sources we believe to be reliable, but we make no representations or warranties, expressed or implied, as to the accuracy of the information. References to square footage or age are approximate. Buyer must verify the information and bears all risk for any inaccuracies.