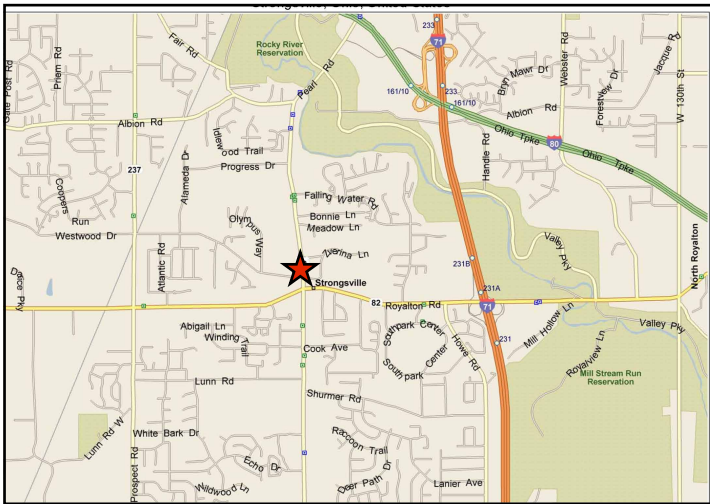


For Sale - .27 Acre Corner Commercial Lot
13593 Pearl Rd.
 Strongsville, Ohio

Property Description

- .27 Acres Zoned GB; General Business
- 24,440 VPD on Pearl Road and 32,860 VPD on Royalton Road
- For Sale at \$250,000
- One Block North of the Intersection of Royalton Rd. (SR 82) on Pearl Rd. (US 42) at the Town Square



Demographics	1 Mile	3 Mile	5 Mile
Population	5,421	46,412	127,647
# of Employees	6,065	26,101	64,829
Average Household Income	\$84,089	\$80,711	\$71,266

Contact Information

Chris Seelig, Vice President
 Director of Retail Services
 3401 Enterprise Pkwy., Ste. 105
 Cleveland, OH 44122
www.naidaus.com
 P 216 831 3310 ext. 126
 F 216 831 9869
cseelig@naidaus.com

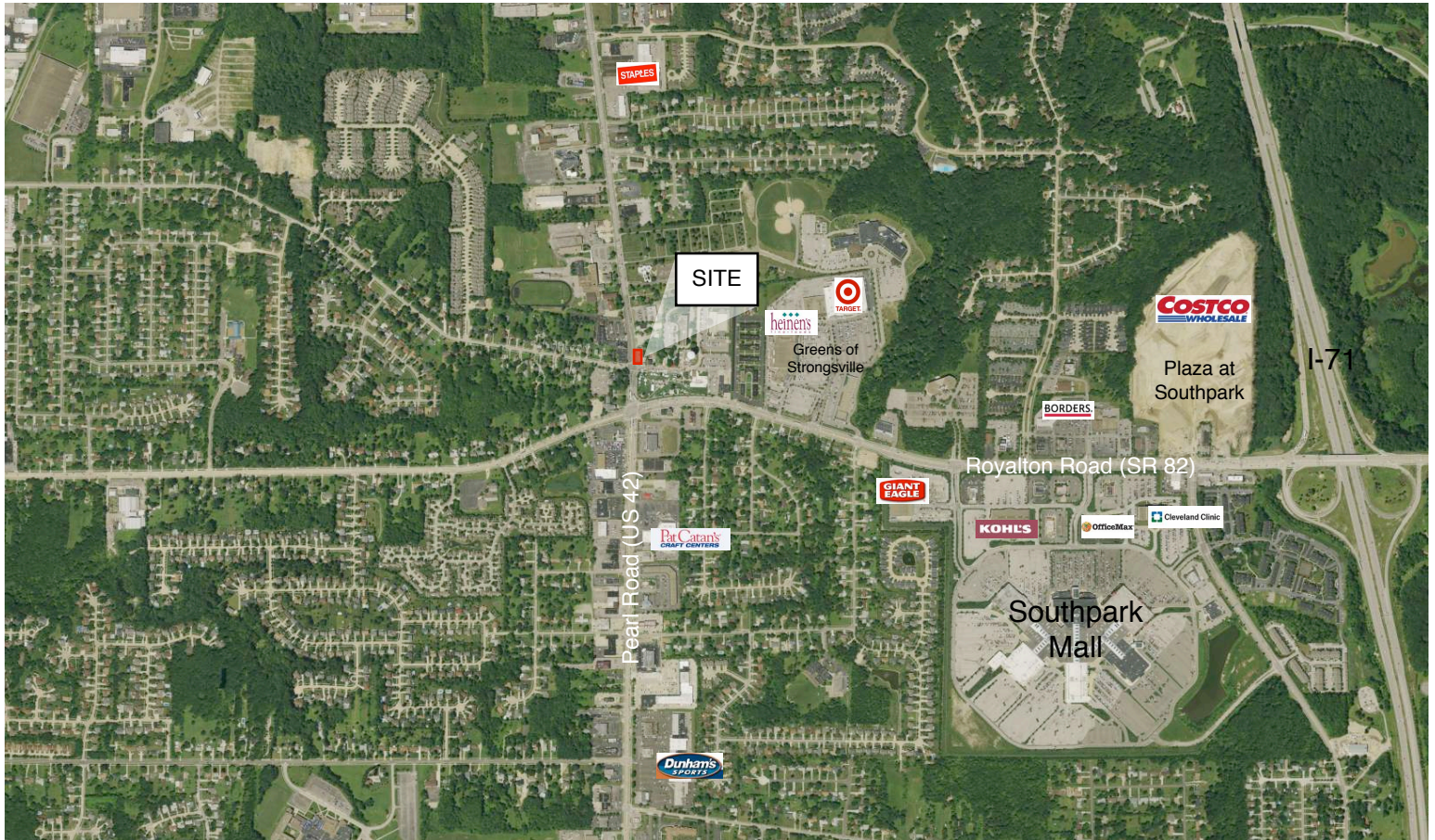


Commercial Real Estate Services, Worldwide.
 Business Property Specialists, Inc. Broker

This information has been secured from sources we believe to be reliable, but we make no representations or warranties, expressed or implied, as to the accuracy of the information. References to square footage or age are approximate. Buyer must verify the information and bears all risk for any inaccuracies.

13593 Pearl Road

Aerial



Contact Information

Chris Seelig, Vice President
Director of Retail Services
3401 Enterprise Pkwy., Ste. 105
Cleveland, OH 44122
www.naidaus.com
P 216 831 3310 ext. 126
F 216 831 9869
cseelig@naidaus.com



Commercial Real Estate Services, Worldwide.
Business Property Specialists, Inc. Broker

This information has been secured from sources we believe to be reliable, but we make no representations or warranties, expressed or implied, as to the accuracy of the information. References to square footage or age are approximate. Buyer must verify the information and bears all risk for any inaccuracies.

SUMMARY DEMOGRAPHIC PROFILE

1990 - 2000 Census, 2006 Estimates & 2011 Projections

Calculated using Proportional Block Groups

Prepared For



Lat/Lon: 41.3175635/-81.8355145

May 2009

RS1

13593 Pearl Rd Strongsville, Ohio		1.00 mi radius	3.00 mi radius	5.00 mi radius
POPULATION	2006 Estimated Population	5,421	46,412	127,647
	2011 Projected Population	5,283	45,305	127,418
	2000 Census Population	5,591	47,759	127,635
	1990 Census Population	4,236	39,459	112,022
	Historical Annual Growth 1990 to 2006	1.7%	1.1%	0.9%
	Projected Annual Growth 2006 to 2011	-0.5%	-0.5%	-0.0%
	2006 Median Age	43.0	39.9	39.2
HOUSEHOLDS	2006 Estimated Households	2,284	17,629	49,055
	2011 Projected Households	2,217	17,182	49,099
	2000 Census Households	2,363	18,158	48,888
	1990 Census Households	1,781	14,316	40,575
	Historical Annual Growth 1990 to 2006	1.8%	1.4%	1.3%
	Projected Annual Growth 2006 to 2011	-0.6%	-0.5%	0.0%
POPULATION BY RACE	2006 Estimated White	88.8%	88.9%	90.8%
	2006 Estimated Black or African American	5.9%	5.6%	5.1%
	2006 Estimated Asian & Pacific Islander	3.7%	3.8%	2.5%
	2006 Estimated American Indian & Native Alaskan	0.1%	0.1%	0.1%
	2006 Estimated Other Races	1.6%	1.6%	1.5%
	2006 Estimated Hispanic	1.4%	1.6%	1.5%
INCOME	2006 Estimated Average Household Income	\$ 84,089	\$ 80,711	\$ 71,266
	2006 Estimated Median Household Income	\$ 65,934	\$ 74,126	\$ 66,134
	2006 Estimated Per Capita Income	\$ 36,957	\$ 31,433	\$ 27,994
EDUCATION (AGE 25+)	2006 Elementary	0.8%	1.0%	1.3%
	2006 Some High School	4.3%	3.6%	4.8%
	2006 High School Graduate	30.6%	28.8%	32.1%
	2006 Some College	20.3%	19.9%	20.6%
	2006 Associates Degree Only	8.3%	8.9%	8.9%
	2006 Bachelors Degree Only	20.0%	22.7%	20.4%
	2006 Graduate Degree	15.8%	15.1%	11.8%
BUSINESS	Number of Businesses	562	2,207	5,479
	Total Number of Employees	6,065	26,101	64,829
	Employee Population per Business	10.8	11.8	11.8
	Residential Population per Business	9.6	21.0	23.3

This report was produced using data from private and government sources deemed to be reliable. The information herein is provided without representation or warranty.